

THE HERON

LAS GALLINAS VALLEY SANITARY DISTRICT

www.lgvsd.org

MARCH 2011

You Say My Broken Home Lateral Caused a Sewer Spill?



Yes, Broken Sewer Laterals Pollute the Environment

*To Learn More,
See the Inside Pages*



AWARDED SEWER COLLECTION SYSTEM OF THE YEAR... AGAIN!

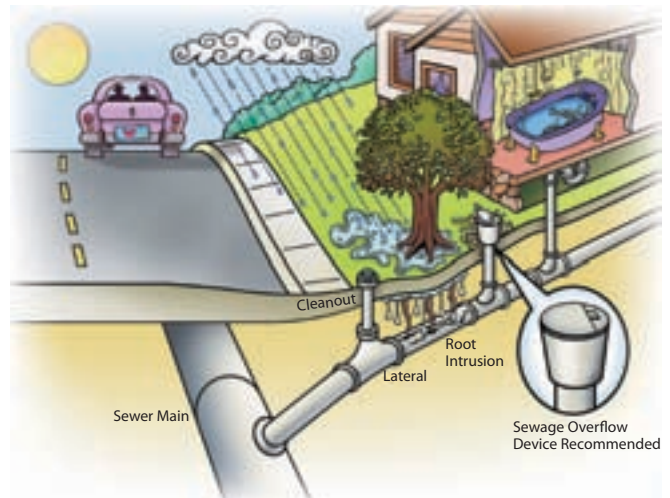
The community has much to be proud of in its forward-looking sanitary program:

- **Best Collection System Record in Three Counties.** Las Gallinas Valley Sanitary District has the lowest rate of spills and overflows of any sanitary agency in Marin, and was recognized as having the Collection System of the Year in a three-county area for the second time in three years.
- **Upgrading Treatment Plant.** We are investing about \$17 million over five years to upgrade our treatment plant and the sewer collection system pipelines.
- **Good Environmental Stewardship.** We provide quality service while protecting the environment through recycled water programs, a large solar power facility, reuse of treatment gasses and more.
- **Rates Below Average.** Through careful planning and good management, we have kept our rates below average for the region.

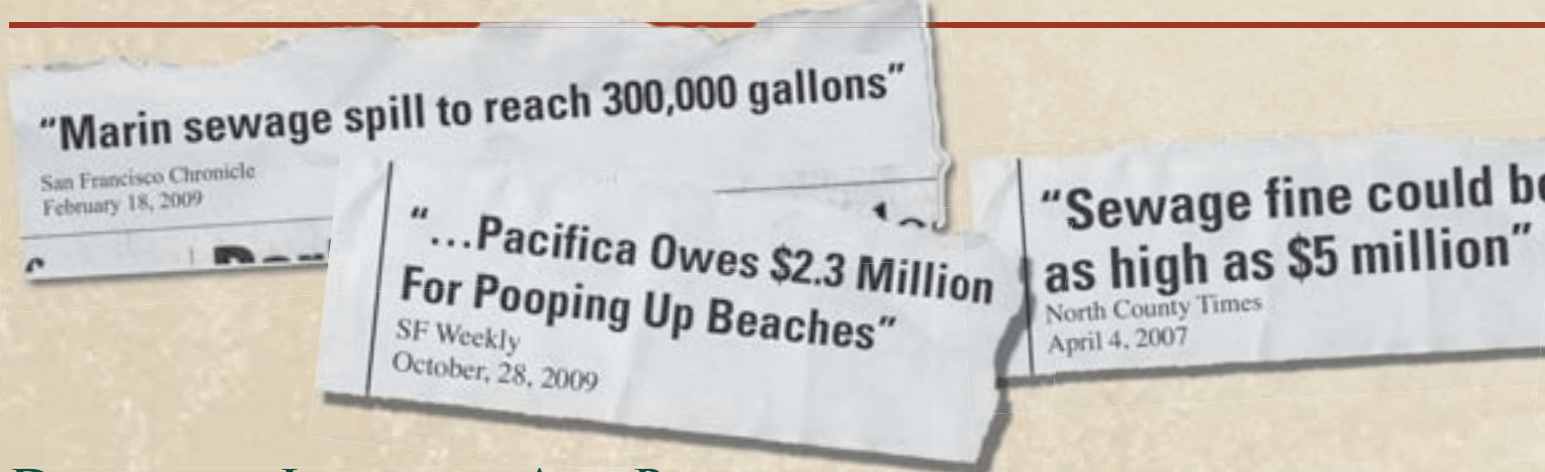
WHAT'S THE BEST WAY TO FIX LATERALS AND HOW TO MAKE IT AFFORDABLE?

Private sewer laterals, the next challenge. There is one key part of the sanitary system that we don't control—privately-owned sewer laterals—the pipeline that runs from your house to the public sewer lines in the street. Many laterals have exceeded their useful life and threaten to cause overflows and spills as they crack and break.

We are identifying how lateral requirements can best be structured so that lateral repairs are affordable to the property owners that are responsible for them. See the inside pages for more on this important issue.



WE'RE TACKLING THE LATERAL SO WE NEVER HAVE HEADLINES LIKE THESE ABOUT



DAMAGED LATERALS ARE PRIVATELY OWNED BUT HARM THE COMMUNITY

One challenge with laterals is that they are privately-owned, yet can cause sewer spills and overflows on public property that we all end up paying for.

During wet weather, massive amounts of stormwater percolate through the soil and into cracks in damaged public sewers and private

laterals. The stormwater mixes with sewage and can overwhelm sewer pipelines and treatment plants, leading to spills and backups. In Las Gallinas the stormwater can increase sewer flows by 900% or more.

With our collection system and treatment plant upgrade programs well underway, your Sanitary

District is beginning the process of developing inspection and repair policies and programs for laterals that will cause the least impact on customers while resulting in steady progress toward repairing them.

Tree Roots and Grease in Laterals Lead to Many Sewer Spills and Clogs

Laterals Become Blocked by Tree Roots



Blockages and clogs lead to sewage spills and overflows, and can cause backups into your home.

Laterals Clog with Cooking Grease



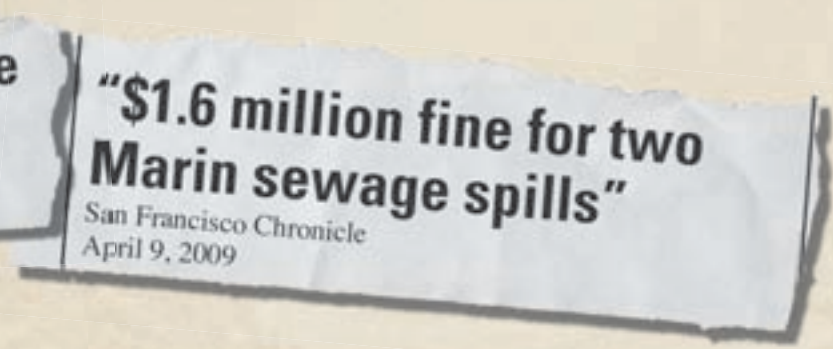
Damaged Laterals Also Allow Harmful Inflow & Infiltration

Laterals Crack, Break & Fill with Stormwater



Stormwater can infiltrate the soil, fill cracked pipes with stormwater, and cause massive flows through sewer pipelines. That is the main cause of sewer overflow problems in Marin County.

PROBLEM OUT US



WE ARE DEVELOPING LATERAL INSPECTION AND REPAIR OPTIONS

With an eye toward developing a fair and comprehensive program that minimizes the impact on customers during these tough economic times, your Sanitary District will develop its lateral program and policies in three steps:

1. **Develop detailed information** about the costs and benefits of various approaches to solving the lateral problem in our service area.
2. **Publicly present the various approaches**, as well as the pros and cons for lateral inspection and repair programs and obtain public input.
3. **Develop a proposed lateral program, and obtain public input.** The final program presented to the Board for approval is likely to be made up of a package of the most cost effective and practical solutions so that there is the least financial impact on our customers.

WHAT WILL HAPPEN IF WE DON'T FIX THE LATERALS

Our sewer mains and treatment plant will eventually not be able to handle the high flows from inflow and infiltration through private laterals, and we could start to experience sewage spills, overflows and costly fines. Also, regulators are expected soon to impose expensive mandates that would require lateral repairs. We want to develop smart, cost-effective solutions before being forced to do it in a more costly way.

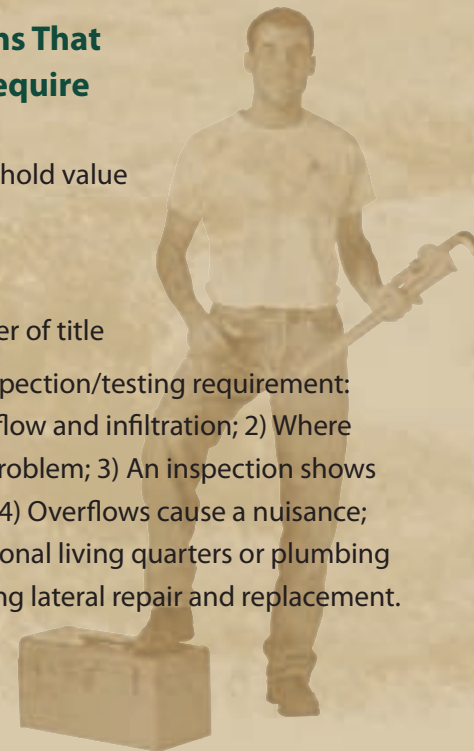
LATERAL REPAIR PROGRAM OPTIONS THE DISTRICT WILL EVALUATE

Examples of Lateral Approaches That Will Be Evaluated

- Repair public sewers to reduce inflow & infiltration
- Continue status-quo private ownership of laterals
- Provide incentives for owners to inspect and repair laterals
- Require disclosure of lateral problems at time of sale
- Carry out public rehabilitation of lower lateral during public sewer projects
- Mandatory inspection when a lateral is suspected to not meet standards
- District takes on ownership of upper or lower laterals
- Increase treatment capacity

Evaluating Situations That Could Potentially Require Inspection/Testing

- Remodel above a threshold value
- Change in use
- Change of customer
- Sale of property/transfer of title
- Wastewater agency inspection/testing requirement:
 - 1) In areas with high inflow and infiltration;
 - 2) Where smoke testing shows problem;
 - 3) An inspection shows blockage or problems;
 - 4) Overflows cause a nuisance;
 - 5) Connection of additional living quarters or plumbing fixtures; and
 - 6) Following lateral repair and replacement.





To Our Friends and Neighbors

Presorted
Standard
US Postage
PAID
Unicorn

300 Smith Ranch Road, San Rafael, CA 94903
Phone 415-472-1734 • Fax 415-499-7715
www.lgvsd.org

Board of Directors

Megan Clark
Russell R. Greenfield
Larry H. Loder
Craig K. Murray
Judy Schriebman

Board Meetings are held at 4:30 p.m. on the second and fourth Thursday of each month.

ECRWSS–Postal Customer

District Administration

Mark R. Williams, *General Manager*

Printed on recycled paper using soy-based inks.

DISTRICT AWARDED \$871,000 GRANT FOR RECYCLED WATER

Las Gallinas Valley Sanitary District has been participating in a collaborative recycled water program called the North Bay Water Recycling Program. The group has received authorization for \$25 million in federal funding for the \$100 million in total projects, and has applied for additional state grants.

The Las Gallinas share of the project involves expanding its recycled water treatment plant to provide recycled water to the Hamilton area. The District is expected to receive up to \$1.2 million in federal funds within the next four years for that project, and has a firm commitment for the first \$871,000 from the American Recovery and Reinvestment Act.

RESIDENTIAL FOOD WASTE COMPOSTING UNDERWAY

25% OF FOOD IS THROWN OUT. WE ARE COMPOSTING IT.

Las Gallinas Valley Sanitary District and its franchise waste hauler Marin Sanitary Service are proud to announce



a new residential food waste composting program across the entire LGVSD service area. Composting will help prevent the release of greenhouse gas emissions and keep even more waste from going to the landfill!

The program allows food scraps to be placed in green cans with yard waste. Residents are being

given a flyer and a new sticker on their green can that will provide more details about how to compost.

To accommodate the new program, green cans **will now be picked up weekly!**

Food waste composting increases our recycling rate by up to ten percent, decreases greenhouse gases, moves us closer to our goal of zero waste and provide a rich organic soil amendment for use on agricultural lands and on local gardens and landscapes. for more information please call (415) 456-2601.

DID YOU KNOW...

Methane gas has a greenhouse gas effect 72 times more powerful than CO₂ over a 20 year period!

The food scrap composting process captures methane that would otherwise escape from landfills and reuses it productively.