



**DISTRICT BOARD**  
 Megan Clark  
 Russ Greenfield  
 Larry Loder  
 Craig K. Murray  
 Judy Schriebman

**DISTRICT ADMINISTRATION**  
 Mark R. Williams,  
 General Manager  
 Michael Cortez,  
 District Engineer  
 Janice Mandler,  
 Collection System/Safety Manager  
 Susan McGuire,  
 Administrative Services Manager  
 Mark Von Aspern,  
 Plant Manager

## Monthly Collection System Report - AUGUST 2011

ACTIVITY	COUNT	LINEAL FEET	% OF TOTAL
TV Inspections	82	18,463	3.12
Smoke Testing	0	0	0
Sewer Cleaning (TV Truck)	104	22,019	3.73
Sewer Cleaning (Flusher Truck)	37	7,536	1.28
Root Cutting (Rodding)	60	10,926	1.85
Push Camera (IRO)	30	4,471	.76
Inspections from above ground (IAG)	1		
Manhole/rod holes repaired or replaced	0		0
Manholes/rod holes sealed against infiltration	0		0
New manhole / rod holes added to the system	0		0
New main sewer line added to the system	0		0
Number of sewer laterals replaced/repared by homeowners	5		

	# of SSOs		TOTAL GALLONS	
	Curr month	YTD	Curr Month	Year
Sanitary sewer overflows (SSOs) reported/verified on District system or public right-of-way	1	2	1440	2,20
Sanitary sewer overflows (SSOs) reported/verified on private property (laterals)	1	6	n/a	n/a

There are approximately 105 miles (554,400 feet) of gravity sewers in the system.  
 There are 6.72 miles (35,482 feet) of force mains in the system.  
 Force and gravity lines equal 568,762 feet  
 There are 120 miles (633,600 feet of sewer laterals)  
 There are 28 pump station / 2,599 manholes

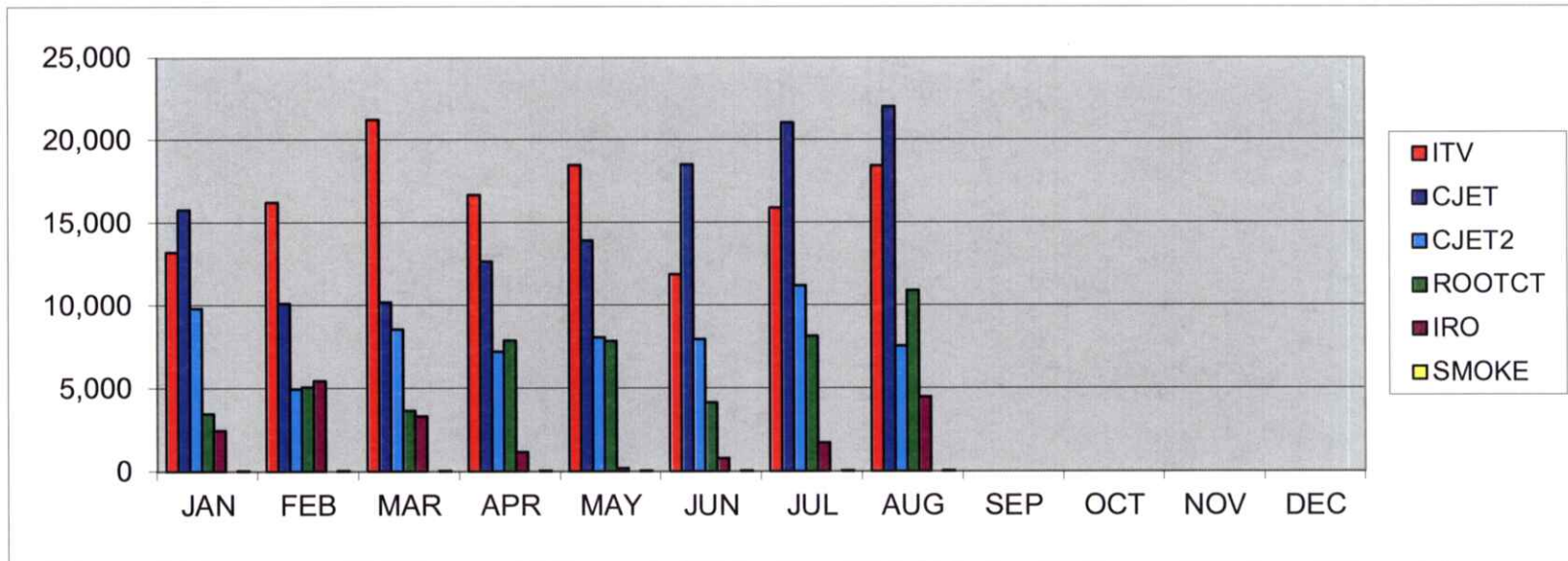
6B.2

# COLLECTION CREW 2011

9/29/2011  
Agenda Item 6B

Measurement in feet

	JAN	FEB	MAR	APR	MAY	JUN	JUL	AUG	SEP	OCT	NOV	DEC	TOTAL
ITV	13,224	16,229	21,237	16,703	18,482	11,885	15,903	18,463					132,126
CJET	15,811	10,130	10,202	12,667	13,920	18,538	21,053	22,019					124,340
CJET2	9,834	4,965	8,548	7,195	8,079	7,948	11,201	7,536					65,306
ROOTCT	3,497	5,067	3,655	7,878	7,859	4,158	8,132	10,926					51,172
IRO	2,459	5,474	3,342	1,150	180	775	1,722	4,471					19,573
SMOKE	0	0	0	0	0	0	0	0					0
IAG	13	17	5	11	12	9	9	1					77



ITV = Camera truck  
 CJET = Flushing with camera truck  
 CJET2 = Flushing with flusher truck  
 CVAC = Vactor

ROOTCT = Rodding  
 IRO = TVing with push camera  
 SMOKE = Smoke testing

6B.1

**AUGUST 2011**

Monthly Collection System Report - JULY 2011 (continued)

**USA's:**

**94**

(x.75 hours per USA = 70.5 hours)

**Special Projects / Unique Situations:**

(tasks that take away from maintenance of lines)

Camera truck in shop for tires

Purchased and delivered 7 manhole lids and rings for slurry project on Appleberry

Push camera in shop – dropped off and picked up twice

Camera truck in shop for tune-up/oil change

Flusher truck in shop replace gasket/oil change

SSMP reviewed with Ray Goebel

Met with Greg Fowley to troubleshoot Capt Cove #6

Met with AT&T to troubleshoot Capt Cover #6

OASIS software updated – installed and reviewed

GIS – Lynx Technologies worked with us for two day

**Safety**

Operator attended "Train the Trainer" for forklift certification

Fall Protection - Du-All

Fire extinguisher had annual maintenance performed

*6B.3*



California Integrated Water Quality System Project (CIWQS)

Spill Public Report – Summary Page

Here is the summary page with the results of your spill public report search. These results correspond to the following search criteria:

SEARCH CRITERIA: [\[REFINE SEARCH\]](#)

- County (Marin)
- Spill Type (sso\_cat1\_2)
- Start Date (01/01/2011)
- End Date (08/31/2011)

Please see the [glossary of terms](#) for explanations of the search results column headings. [More information about the report is found at the bottom of this page.](#)

[\[VIEW PRINTER FRIENDLY VERSION\]](#)

[\[EXPORT THIS REPORT TO EXCEL\]](#)

[\[EXPORT ALL SPILL DETAILS TO EXCEL\]](#)

Region	Responsible Agency	Collection System	Total Number of SSO locations	Total Vol of SSOs (gal)	Total Vol Recover (gal)	Total Vol Reach Surface Water	Percent Recover	Percent Reach Surface Water	Miles Pressure Sewer	Miles Gravity Sewer	Miles of Laterals	Total Number of SSO locations per 100 miles of Sewer	Total Vol Reach Surface Water per 100 miles of Sewer	WDID
2	Almonte SD	Almontesd CS	1	300	0	0	0	0	0.0	6.0	0.0	16.6	0.0	2SSO10089
2	BOLINAS COMMUNITY PUBLIC UTILITY DISTRICT (BCPUD)	Bolinas Community PUD CS	1	300	200	100	66	33	1.0	3.0	0.0	25.0	2,500.0	2SSO11509
2	Homestead Valley Sanitary Dist	Homestead Valley Sanitary Dist CS	1	900	0	900	0	100	0.0	11.0	0.0	9.0	8,181.8	2SSO10143
2	Las Gallinas Valley Sanitary District	Las Gallinas CS	2	2,220	0	780	0	35	6.7	105.0	0.0	1.7	698.2	2SSO10147
2	MARIN COUNTY Sanitary District #5	Marin Csd 5 - Tiburon Plant CS	6	1,212	0	455	0	37	5.0	33.0	0.0	15.7	1,197.3	2SSO10151
2	Novato Sanitary District	Novato And Ignacio CS	8	5,291	1,330	3,908	25	73	27.0	198.0	0.0	3.5	1,736.8	2SSO10162
2	RICHARDSON BAY SD/TIBURON City	Richardson Bay Sd CS	1	70	0	0	0	0	8.0	40.0	0.0	2.0	0.0	2SSO10169
2	SAUSALITO-MARIN CITY SAN DIST	Sausalito CS	1	5,050	0	0	0	0	3.1	7.9	0.0	9.0	0.0	2SSO10189
2	San Rafael Sanitation District	San Rafael SD CS	6	1,690	1,490	200	88	11	13.0	130.0	0.0	4.1	139.8	2SSO10184
2	Sanitary District #1 of Marin	San Dist #1 of Marin CS	28	34,044	795	28,800	2	84	9.0	195.0	0.0	13.7	14,117.6	2SSO10172
2	Sanitary District #2 of Marin	Sanitary District #2 Of Marin CS	1	5	5	0	100	0	4.5	44.5	0.0	2.0	0.0	2SSO10185

LB.4

2	Sausalito City	<u>City CS</u>	<u>3</u>	840	350	415	41	49	1.0	25.0	0.0	11.5	1,596.1	2SSO10114
	Tamalpais													
2	Community	<u>Tamalpais</u>	<u>5</u>	3,265	760	1,750	23	53	2.0	27.0	12.0	12.1	4,268.2	2SSO10202
	San Dist	<u>CSD CS</u>	<u>64</u>	55,187	4,930	37,308			80.3	825.4	12.0			

Each individual SSO report contains the data related to one specific location where sewage discharged from the sanitary sewer system due to a failure (e.g., sewer pipe blockage or pump failure). A single failure within a sanitary sewer system can result in multiple sewage discharge locations and, thus, multiple SSO reports. For example, a lift station power failure can result in sewage being discharged from numerous manholes. In this example, a SSO report would be submitted for each manhole that discharged sewage with all reports sharing the same failure or cause data.

It is important to review SSO reports in detail to determine if individual sewage discharge locations share a common underlying failure or cause when assessing the performance of Enrollees and their sanitary sewer systems through SSO events. This is because it is the failures that are the ultimate problem which the Enrollees should be making all reasonable efforts to prevent.

The search results below present summary data for all sewage discharge locations, as submitted through individual SSO reports, which meet the search criteria selected. To determine if SSO reports relate to a common failure within the sanitary sewer system, the SSO reports should be reviewed in detail by selecting the specific "agency" or "collection sys" name from the table below.

The "agency", or Enrollee, listed on a SSO report is responsible for the sewage discharge described and should be contacted directly for questions related to that incident.

The current report was generated with real-time data entered by Enrollees.

[Back to Main Page](#) | [Back to Top of Page](#)

© 2006 State of California.

68.5

**MARIN COUNTY SSO DATA**  
01/01/2011 - 08/31/2011

	SSO per 100 miles	Volume reaching surface water
<b>AVERAGE</b>	6.63	1,812
<b>LGVSD</b>	1.7	2,220

