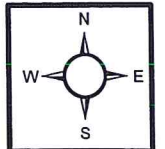
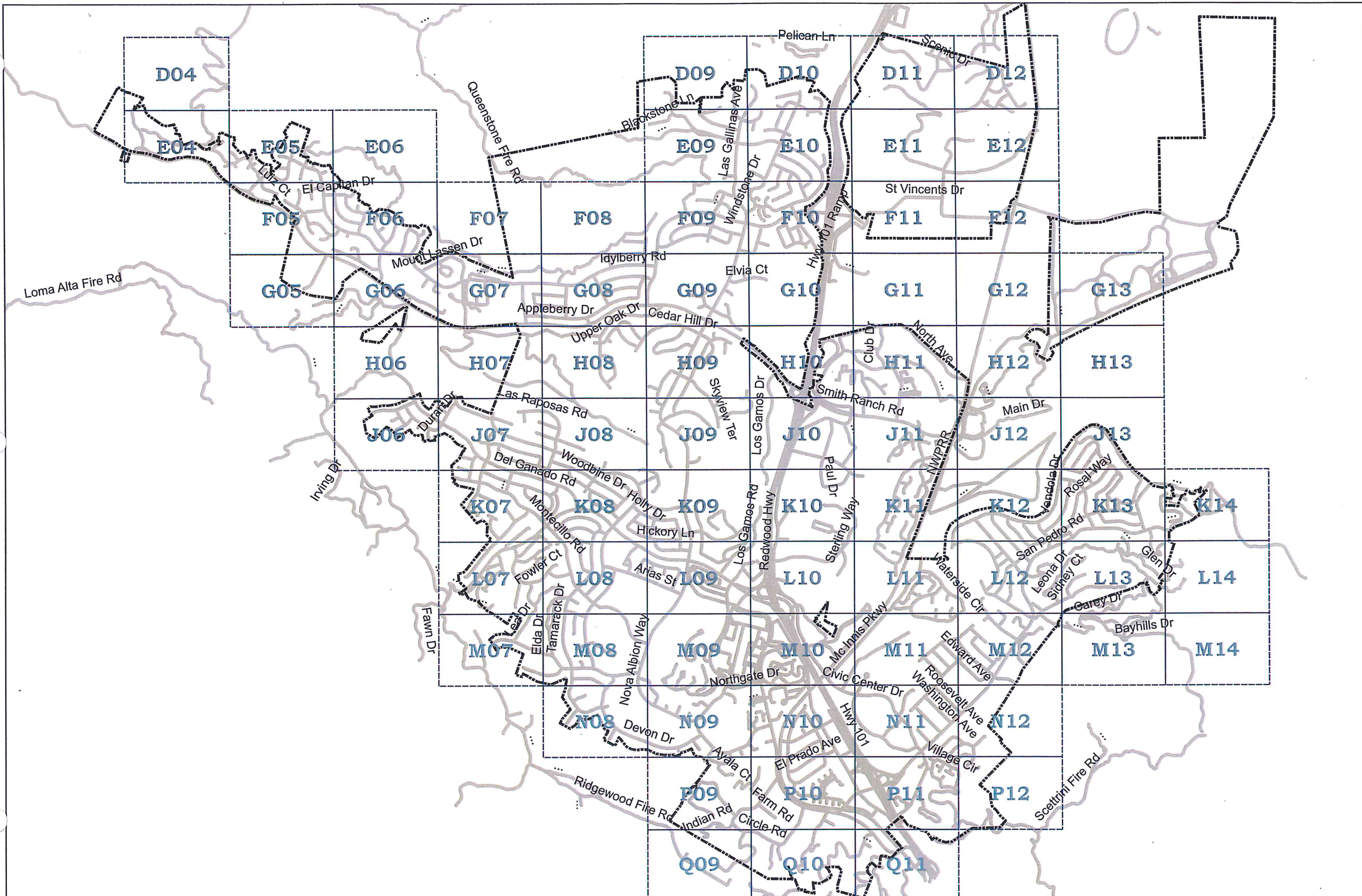


Appendix E

Documents Related to Section 4 (Operations and Maintenance Program)

1. Collection System Map Key and Example Map
2. Example PM Work Order from Cityworks
3. Example Maintenance History Map from Cityworks
4. Example Hot Spots-Repairs-Cleaning Frequency Map from Cityworks
5. Example Collection System Reports to LGVSD Board
6. Example “Areas of Concern” Printout
7. Letter to Plumbers and Sewer Contractors
8. Permit Application – District Mainline or Property Lateral
9. Example Permit Application Log
10. Plumber / Sewer Contractor Brochure

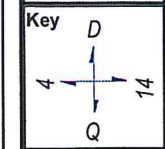
This page intentionally blank



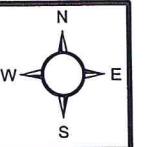
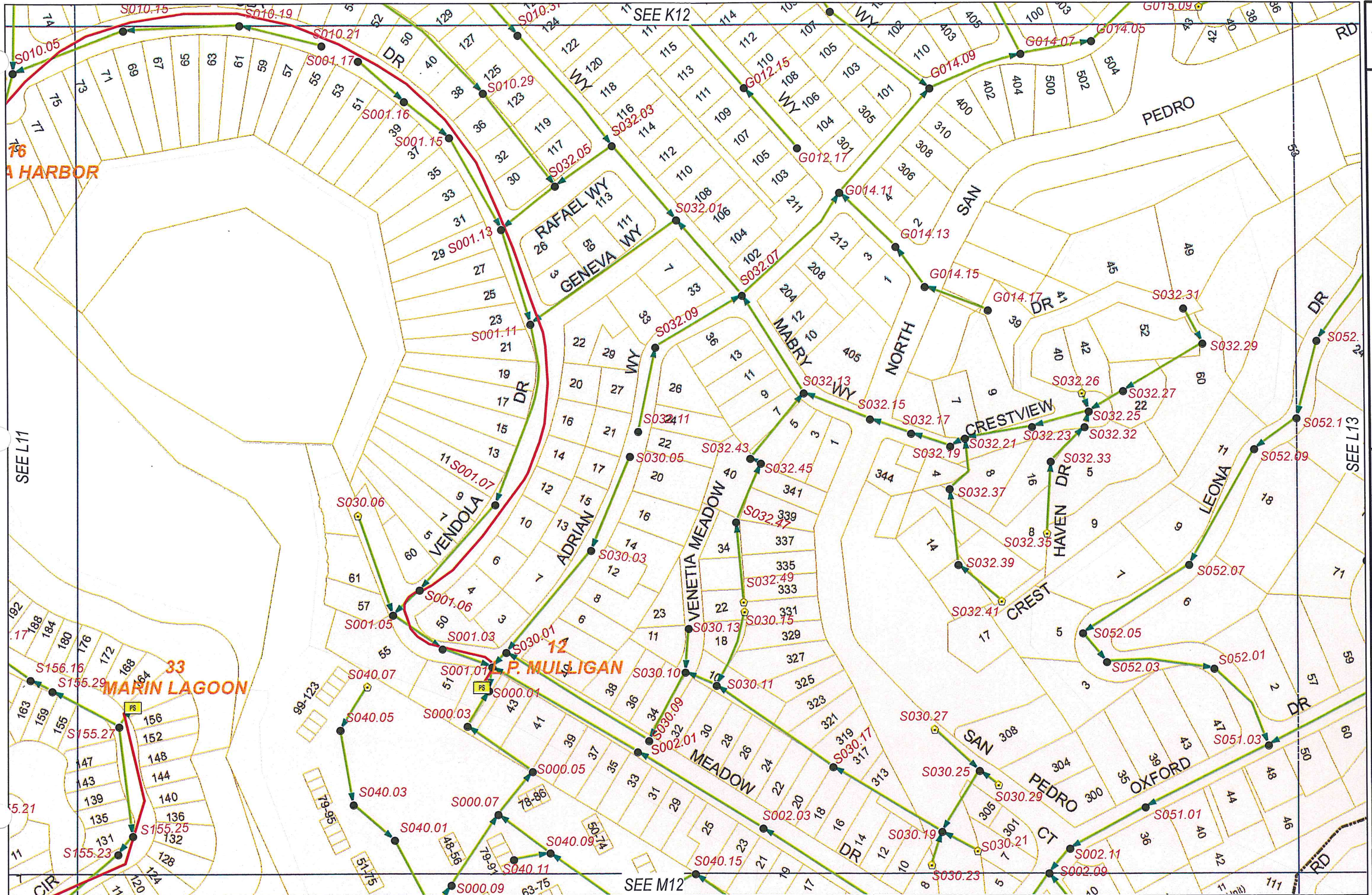
**SANITARY SEWER SYSTEM
INDEX MAP**

Date: 7/22/2013

LAS GALLINAS VALLEY SANITARY DISTRICT
Marin County, California



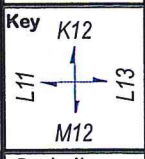
Drawing No.
Index



SANITARY SEWER SYSTEM

Date: 7/22/2013

LAS GALLINAS VALLEY SANITARY DISTRICT
Marin County, California



Key K12
L11 L13
M12
Drawing No.
L12

Work Order 1298
Clean (Maintenance Crew)

Status : OPEN

Priority: 3 **Category:** PM

Submit To: Crew, Maintenanc

Initiated By: Pease, Greg

Date: 7/6/2018 8:07:29AM

Requested By: Pease, Greg

Supervisor: Pease, Greg

Submit to Date: 7/6/2018 8:07:45AM

Projected Start: 7/6/2018 8:07:29AM

Projected Finish: 8/5/2018 8:07:29AM

Opened By:

Date:

Closed By:

Date:

Completed By:

Actual Start:

Actual Finish:

Stage: ACTUAL

Expense Type: MAINT

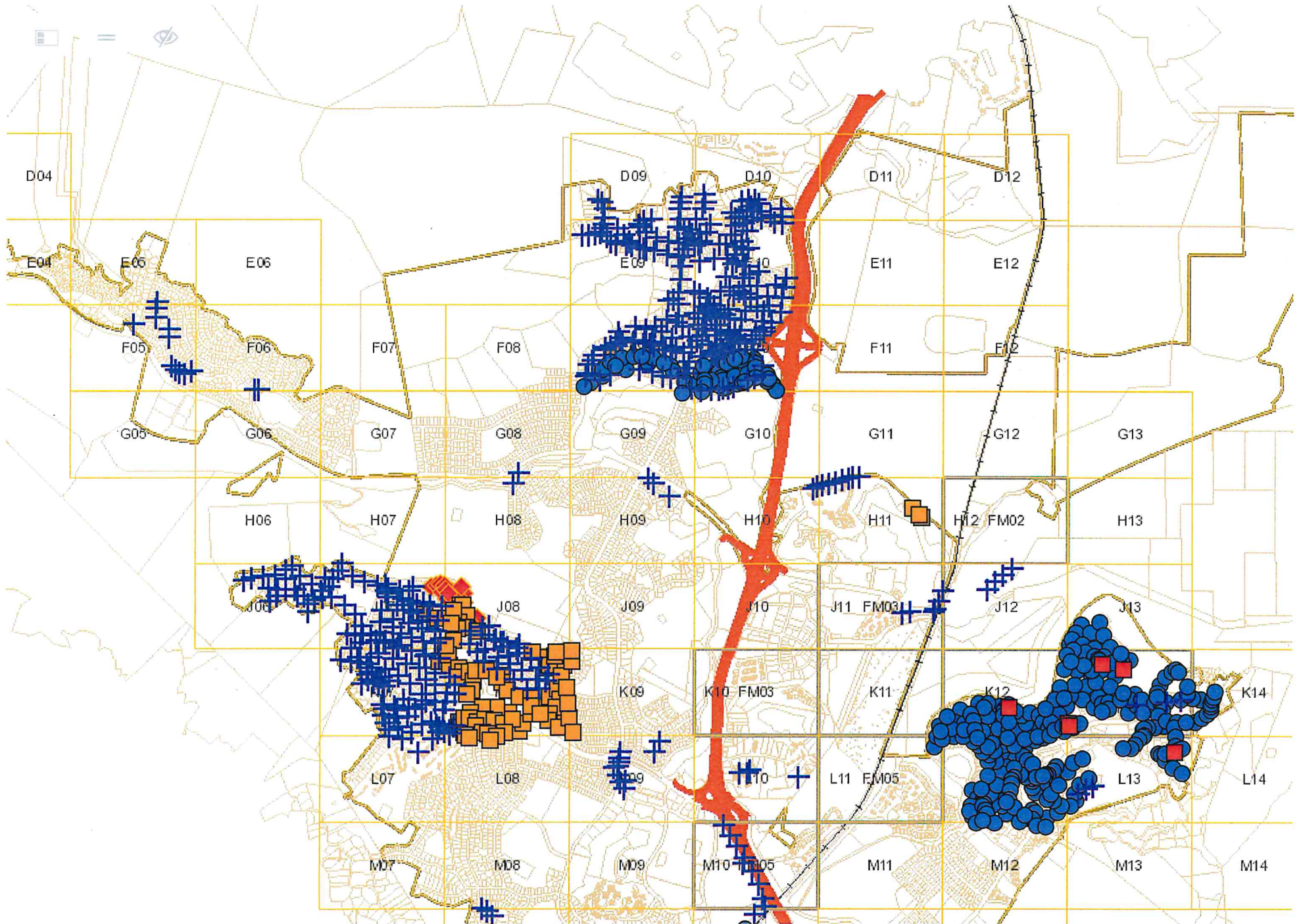
Tasks:			
<u>Name</u>	<u>Description</u>	<u>Status</u>	<u>Proceed?</u>

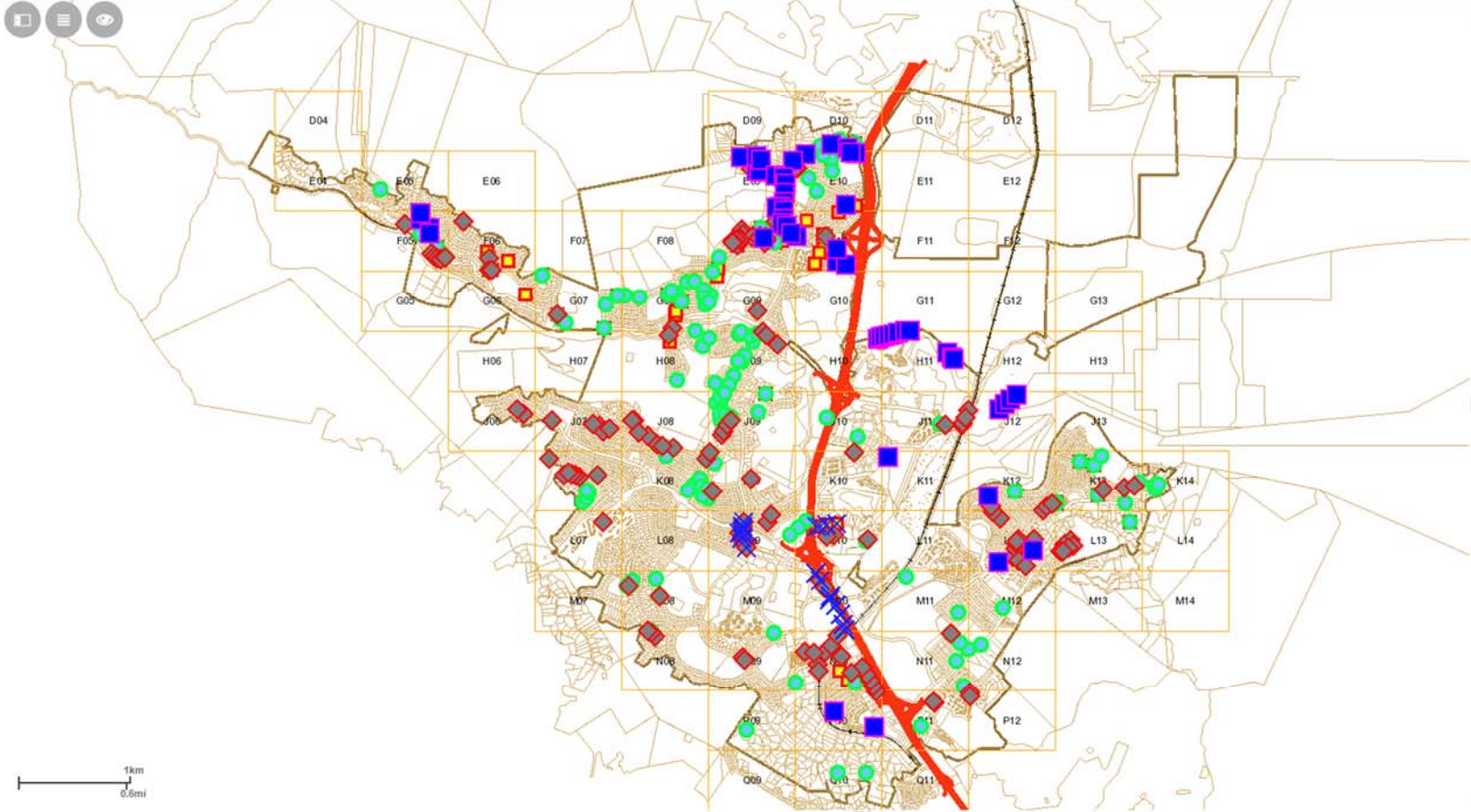
Assets:		
<u>Type</u>	<u>Uid</u>	<u>Location</u>
PIPES	M001.14/M001.13	

Example Work Order History from Cityworks

Id	Insp Template Id	Description	Priority	Status	Submit To	Proj Start Date	Proj Finish Date	Actual Start	Actual Finish	Address	Date Initiated	Closed Date	District
3206		CJET (Camera Crew)	3	CLOSED	Crew, Camera	11/1/2018 12:00	01/31/2019 12:00		11/27/2018 10:07		11/1/2018 05:08	06/20/2019 11:18	
6874		ITV	3	CLOSED	Crew, Camera	06/20/2019 11:19	08/19/2019 11:19		06/20/2019 02:11		06/20/2019 11:19	07/25/2019 01:48	
6878		CJET (Camera Crew)	3	CLOSED	Crew, Camera	06/20/2019 02:14	08/19/2019 02:14		06/20/2019 02:13		06/20/2019 02:14	07/29/2019 09:18	
7407		ITV	3	OPEN	Crew, Camera	06/20/2023 02:11	08/19/2023 02:11				07/29/2019 09:16		
7408		Clean (Maintenance Crew)	3	OPEN	Crew, Maintenance	07/29/2020 09:16	09/27/2020 09:16				07/29/2019 09:16		

Tools Legend Locate Create Activity Selection Measure Layer Search Printing





Legend

- PM's - Every 2 year -
- PM's - 1 Year Cycle -
- PM's - 1 Year Cycle
- Hotspot - 3 month c -
- Hotspot - 3 month cycle
- Hotspot - 6 month C -
- Hotspot - 6 month Cycle
- All Repairs -
- All Repairs
- Maintenance Crew -
- Orders last 100 Montns
- Hotspots - 1211201!
- IAG Search - Manh
- Area of Concern -
- Las Gallinas Assets
 - Structures
 - Force Mains
 - Laterals
 - Pipes
 - FM_Valves
 - Pump Stations
 - Septic Tanks
 - Disconnected Structure
- Man Bunk Grid

Collections/Maintenance/Safety Department Report

July – December 2019



Recently Purchased 2019 VacCon

Collection System Maintenance

COLLECTION CREW 2019

Measurement in feet

	JANUARY - JUNE	JULY - DECEMBER	TOTAL
ITV	17,856	16,984	34,840
			-
CJET	82,233	54,719	136,952
			-
CLEAN	134,353	94,141	228,494
TOTAL	234,442	165,844	400,286

ITV = Camera truck

CJET = Flushing with camera truck

CLEAN = Flushing with flusher truck



Collections/Maintenance/Safety Department Report

Underground Service Alerts - Markouts Completed

- 1,476 USA's completed (0.75 hours x 1476 = 1,107 hours)

Service Requests (Customer call outs - Incident Reports)

- There were 7 Service Requests for the months of July -December 31, 2019

Collection System Overflow Summary

Sanitary Sewer Overflows (SSO) – There were (0) Sanitary Sewer Overflow reported/verified in the District.

of spills Year to Date

- Jan – Mar. = 1; Apr. – June = 1; July – Sept. = 0; Oct. – Dec. = 0

New Construction - Lateral Inspections

- 48 inspections completed (0.75 hours x 48= 36 hours)

Private Sewer Lateral Replacement

- (54) lateral replacement/repair permits issued.
- (48) laterals replaced = approximately 2,025 feet of Sewer Laterals Replaced

Lateral Inspection Ordinance

- The Sewer Lateral Inspection Ordinance No. 180 was adopted November 21, 2019.
- Beginning the week of December 2, 2019, administrative duties began in order to create the necessary forms, applications, report templates and notifications to the appropriate agencies effected by the Ordinance.

District Maintenance activities performed by the Skilled Maintenance Worker and Out of Class Assignment Maintenance Supervisor during October – December 2019 (Skilled Maintenance Worker start date – October 2019.

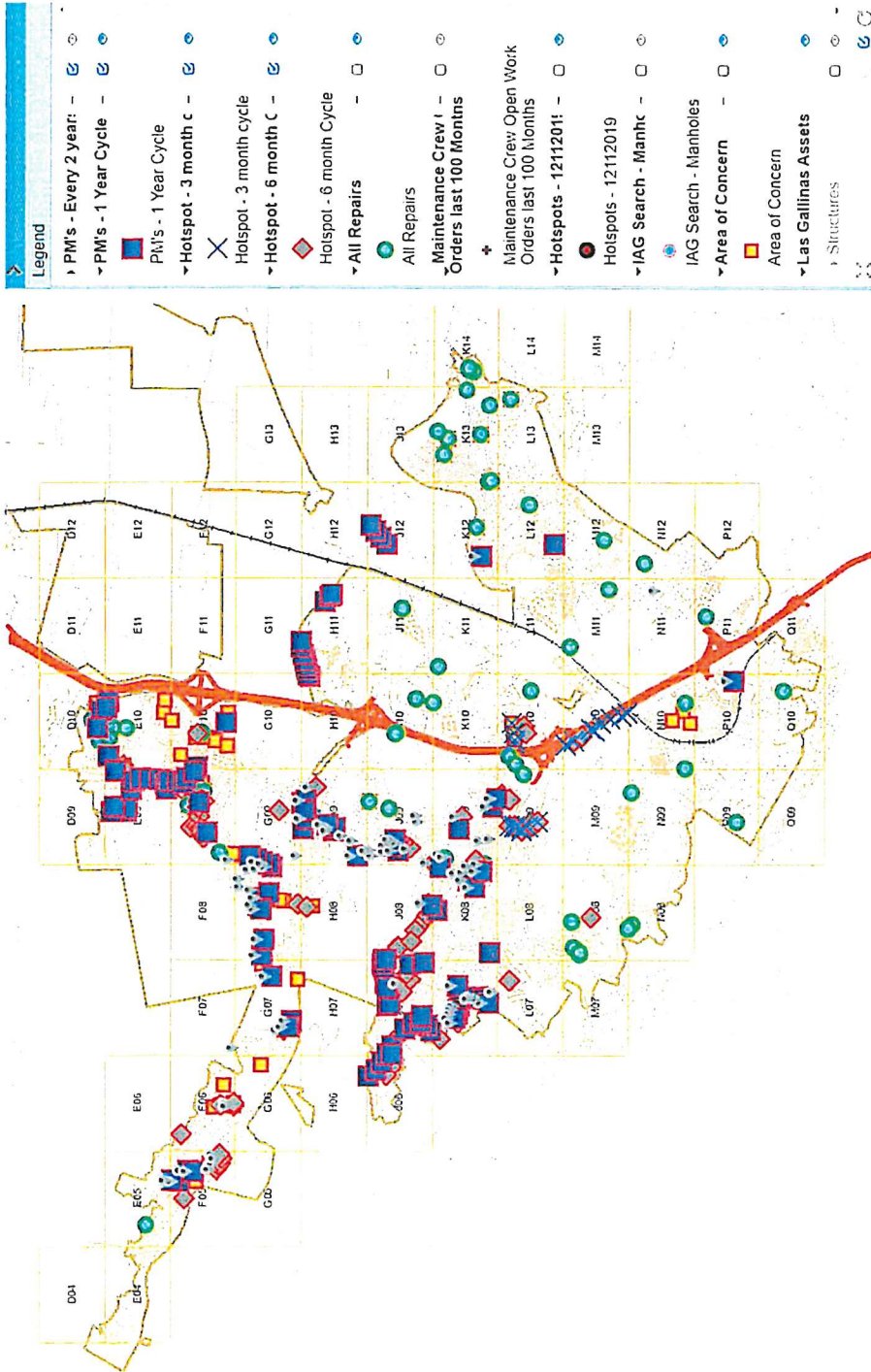
- October 2019: Rebuild Redwood valve box behind old administration building.
- October 2019: Safety Trip Hazard Identification and Painting (Curb and other raised hazards in plant and corporation yard).
- November 2019: Extensive vegetation cleanup in reclamation
- November 2019: Reclamation Pump Station vegetation removal, regrading and general cleanup.
- November 2019: Reclamation Shop cleanup and regrading/addition of rock to the parking area
- December 2019: Plant Operations Control center remodel and relocation
- December 2019: Collections/Maintenance Department conference room remodel and relocation
- December 2019: Deep Bed Filter - Pump drain line replacement
- December 2019: Fixed Film Reactor – Pump replacement

Safety - Calendar

- July 16, 2019 – Hearing Conservation Training
- August 2019 – Hearing Tests
- September 17, 2019 Hazardous Communication and Hazardous Waste
- October 15, 2019 – Spill Prevention, Containment and Cleanup. Spill Drill
- December 17, 2019 – Lock Out Tag Out procedures and practical

Collections/Maintenance/Safety Department Report

Collection System Problem Spot Map – In Development (Cityworks)



This page intentionally blank

Las Gallinas Valley Sanitary District



COLLECTION SYSTEM ANNUAL REPORT

2017

Las Gallinas Valley Sanitary District

Collection System Annual Report

2017

The Las Gallinas Valley Sanitary District's collection system is comprised of 105 miles of gravity sewer lines, 6.72 mile of force mains, and 28 pump stations. The following report encompasses collection system information for the year 2017.

Currently, we have five collection crew members:

Bob Buchholz	Leadsman/Maintenance Crew	15 years of service
Rob Fernandes	Camera Crew	12 years of service
Chris Gill	Camera Crew	4.5 years of service
Brian Johnson	Maintenance Crew	11 years of service
Greg Pease	Manager	3 years of service

There are two crews with two employees in each crew. The Camera Crew is responsible for the televising of the District, as well as flushing the District lines. The Maintenance Crew is responsible for all rodding, push camera tasks, flushing of lines, the marking of USAs (Underground Service Alerts) and all repair/replacement lateral inspections.

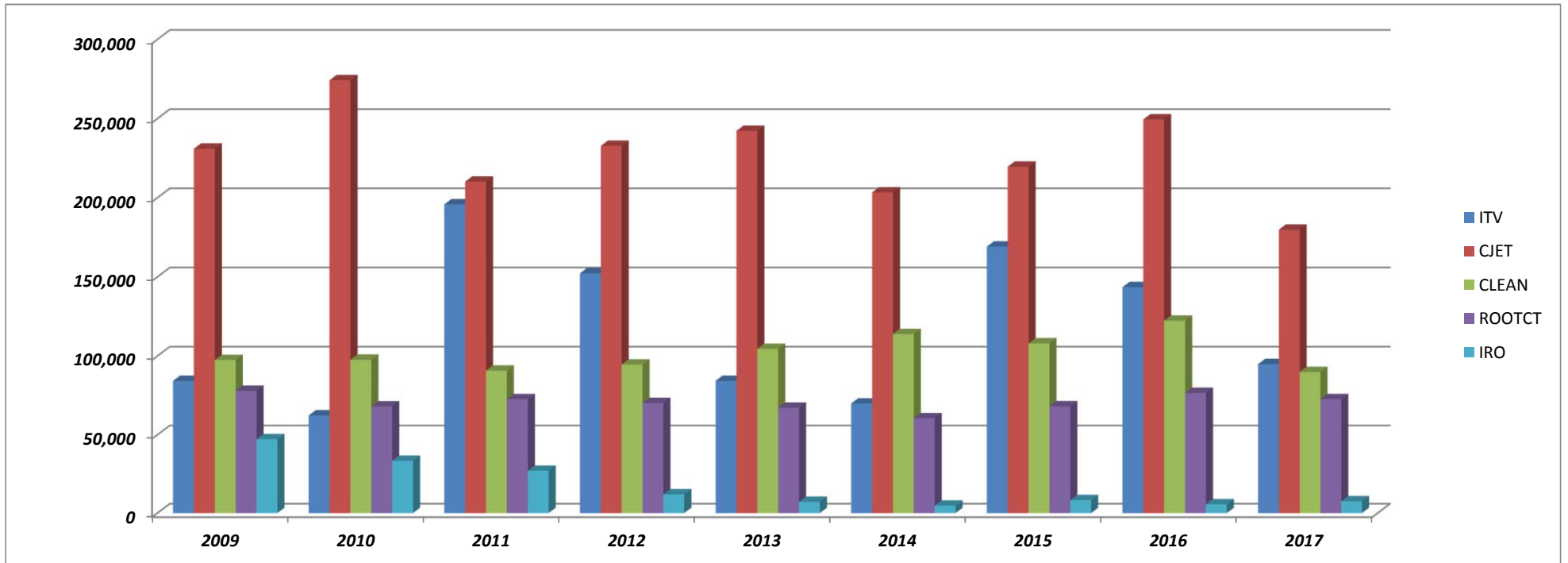
Both crews respond to incidents, overflows, and lateral inspections. All collection crew employees rotate standby duties. The collection crew is also responsible for the monitoring and maintenance of 9 pump stations at Marin Lagoons and 6 pumps stations at Captain's Cove, as well as the weekly pumping down of the Mulligan pump station.

FOOTAGE RESULTS:

Table 1 has been developed and maintained for 11 years so that the amount of footage can be tracked and comparison of others years production can be seen. This table depicts how many feet of televising, flushing, and rodding were performed each year as well as the cumulative footage since recordkeeping began. Since 2005, each line in the District has been assessed and a third round of televising is being completed. It takes approximately 4 years to televise the entire District. This information is stored in the OASIS program and a spreadsheet is maintained showing all lines that need to be repaired or replaced.

Table 1
COLLECTION CREW FOOTAGE HISTORY (feet)
2009 - 2017

	2009	2010	2011	2012	2013	2014	2015	2016	2017	TOTAL	AVERAGE PER YEAR
ITV	84,343	62,396	195,816	152,299	84,326	70,046	169,111	143,501	94,911	1,056,749	176,125
CJET	230,971	274,221	210,158	232,761	242,223	203,364	219,583	249,475	179,853	2,042,609	340,435
CLEAN	97,508	97,665	90,820	94,603	104,533	113,909	107,986	122,345	89,952	919,321	153,220
ROOTCT	78,080	68,103	72,718	70,283	67,311	60,607	68,231	76,703	72,728	634,764	105,794
IRO	47,225	33,459	27,039	11,994	7,194	4,723	8,298	5,632	7,545	153,109	25,518
Total	538,127	535,844	596,551	561,940	505,587	452,649	573,209	597,656	444,989	4,806,552	



SANITARY SEWER OVERFLOWS

Table 2: This table reflects the Sewer Overflow history for the District since 2007. Sanitary Sewer Overflows (SSOs) have steadily declined in numbers and volume since 2007. This table also reflects the cause of spills and shows that roots are the District's main concern. The 2017 year ended with two spills (The total gallons spilled were 69). Zero spills remain the District's goal.

Table 3: This spreadsheet is maintained for all sewer spills in the year 2017. All mainline spills are recorded as well as lateral spills that the District is made aware of. The District is not always advised of lateral spills or their volume.

Table 4: All mainline and force main spills are reported to the State Integrated Water Quality System (CIWQS). Table 4 is a printout of the entire Region 2 spills for 2017. Region 2 encompasses 23 facilities that range in size from 2.0 miles up to 198 miles. LGVSD has continuously had the best record with regard to SSO's per miles of system. During 2017, LGVSD at 105 miles of system, had 2 SSOs. To put the LGVSD success into perspective, the regional average for number of spills per 100 miles per year (2017) is 22.37. LGVSD's average number of spills per 100 miles per year in 2017 is 1.8.

LGVSD continues to make every attempt to attain zero SSO's. The crews' performance and rescheduling of preventative maintenance is instrumental in lower SSOs. Continual training is performed on how to prevent a SSO and how to respond to them. Once a SSO occurs, it is imperative that the District's response be swift and accurate. All line crew personnel share standby duty so that if a spill occurs during off hours, the service rendered is as thorough as during work hours. When a spill occurs, the steps taken to mitigate the duration are essential as it lessens the volume of the spill.

Table 2

Las Gallinas Valley Sanitary District Sewer Overflow History

	2008	2009	2010	2011	2012	2013	2014	2015	2016	2017	TOTALS
<i>GREASE</i>	0	0	0	0	0	1	0	3	0.5	0	4.5
<i>ROOTS</i>	2	1	2	1	2	1	3	2	1.5	1	14
<i>I&I</i>	0	0	0	1	0	0	0	0	0	0	1
<i>DEBRIS</i>	1	1	0	0	3	1	0	1	0	0	7
<i>INFRASTRUCTURE</i>	2	3	0	0	3		0	0	0	1	8
TOTAL SPILLS	5	5	2	2	8	3	3	6	2	2	38
TOTAL GALLONS	409	3,455	225	2,220	56,190	1,073	114	1,964	9	67	65,726

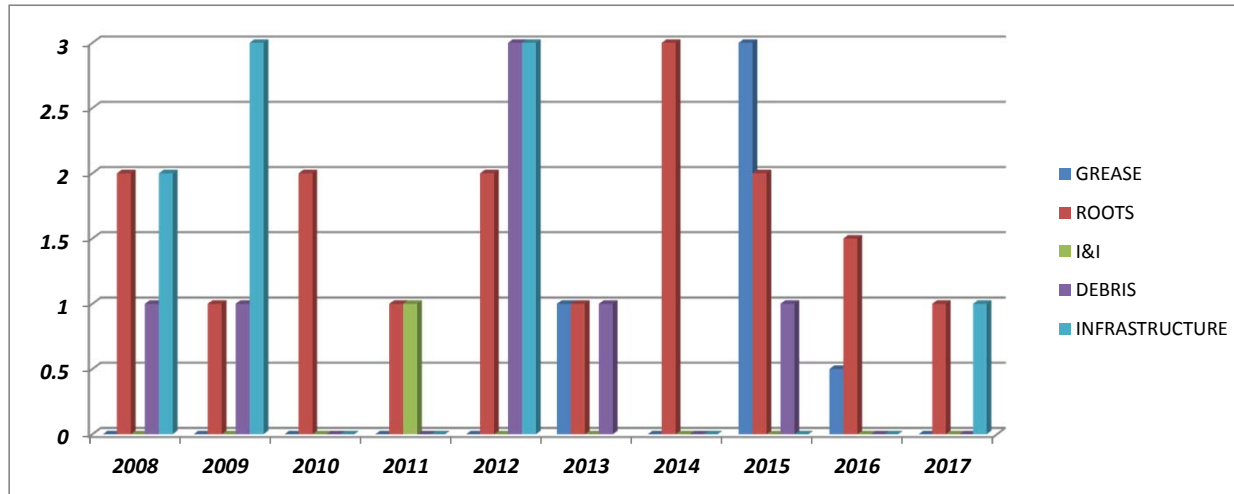
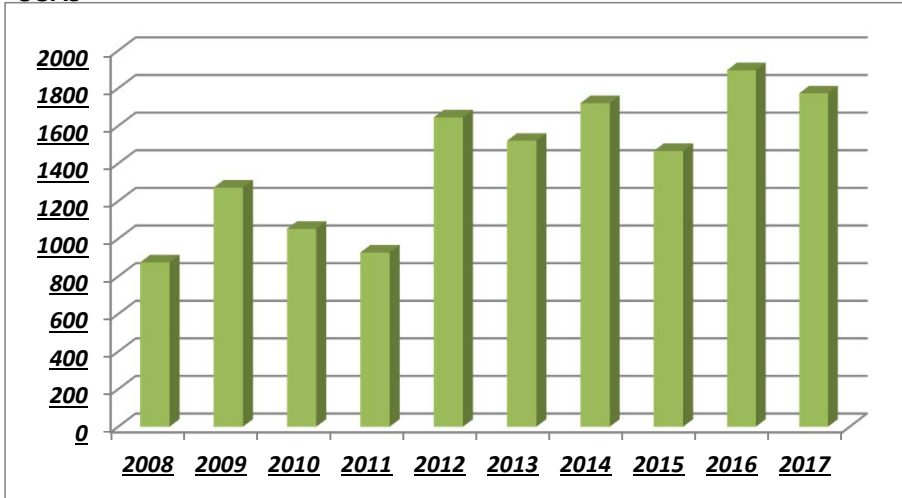


Table 5

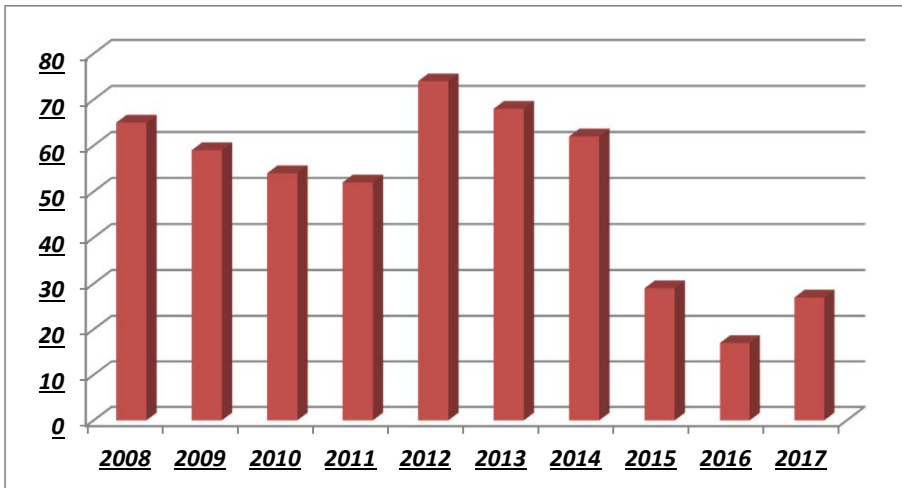
USA / INCIDENTS / PERMITS HISTORY

YEAR	USA's	INCIDENTS	PERMITS
2008	875	65	31
2009	1272	59	36
2010	1053	54	60
2011	927	52	68
2012	1645	74	81
2013	1,521	68	100
2014	1,721	62	141
2015	1,467	29	190
2016	1,896	17	141
2017	1,773	27	125

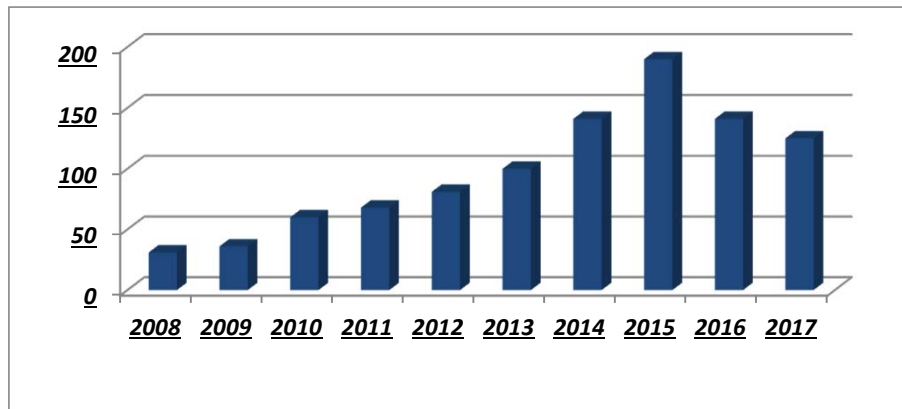
USAs



INCIDENTS



PERMITS



USAs / INCIDENTS / PERMITS HISTORY

Table 5

USAs: In 2017, the District received, located and marked, 1,773 Underground Service Alerts (USAs). Underground Service Alerts are accurate markings of our sewer line locations and are issued when any type of digging is to be performed. This assures that our pipes are protected when there is digging near our pipes. 1,773 USAs, estimated at 45 minutes work production for each one, took 1,330 work hours for the year, or 110 work hours per month. The required marking of USA's has a large impact on our production hours. The graph shows the history of USAs from 2007 to current.

INCIDENTS: An incident report is taken each time a citizen or homeowner calls the District with a concern, complaint, or question. This could be a sewer overflow, questions regarding a homeowner's lateral, an odor complaint, a noisy manhole cover, or any number of issues. In 2017, we received 27 incident calls. The table shows the number of incidents reported annually to the District from 2007 to present. We feel the recent drop in incidents is a direct result of public outreach and staff development regarding the reporting of such incidents.

PERMITS: It is a requirement of the District for plumbers to obtain a no-cost permit and have a no-cost inspection conducted when they are performing any work on a homeowner's lateral. Permits have continued to raise as a result of the collection crews' efforts to inform plumbers and homeowners of the ordinance requirements. Plumbers and contractors who have performed work in the District are annually mailed a letter along with a brochure and a permit form. They are offered a copy of the District specifications. The collection crew consistently observes plumbers in the field and relays information to the District Office to determine if a permit has been issued for a specific location. The *Plumber and Sewer Contractors* brochure was developed in 2010. The brochure is included in the annual plumber mailing and are also carried on all of the District's line crew vehicles.

In 2017 the District issued 127 permits. The number of permits continues to hold steady. The graph following shows the history of permits from 2007 to 2017.

Table 6 Illustrates the problems that were reported as incidents for the last 7 years.

<u>PROBLEM</u>	<u>2009</u>	<u>2010</u>	<u>2011</u>	<u>2012</u>	<u>2013</u>	<u>2014</u>	<u>2015</u>	<u>2016</u>	<u>2017</u>
<i>Lateral</i>	36	31	36	41	29	27	13	7	10
<i>Main</i>	4	2	2	9	9	1	7	5	3
<i>Odor</i>	2	5	2	6	4	1	3	0	1
<i>Other*</i>	15	16	12	18	26	33	6	5	13
TOTAL	57	54	52	74	68	62	29	17	27

*Other category - could be storm drain issues, broken water pipes, broken irrigation system, road problems and noise.

SAFETY:

As of December 31, 2017, the District employees have gone 461 days without a lost time accident. The district's diligence with regards to safety has created an environment where employees are safety conscious and are encouraged to bring concerns or issues to their management team.

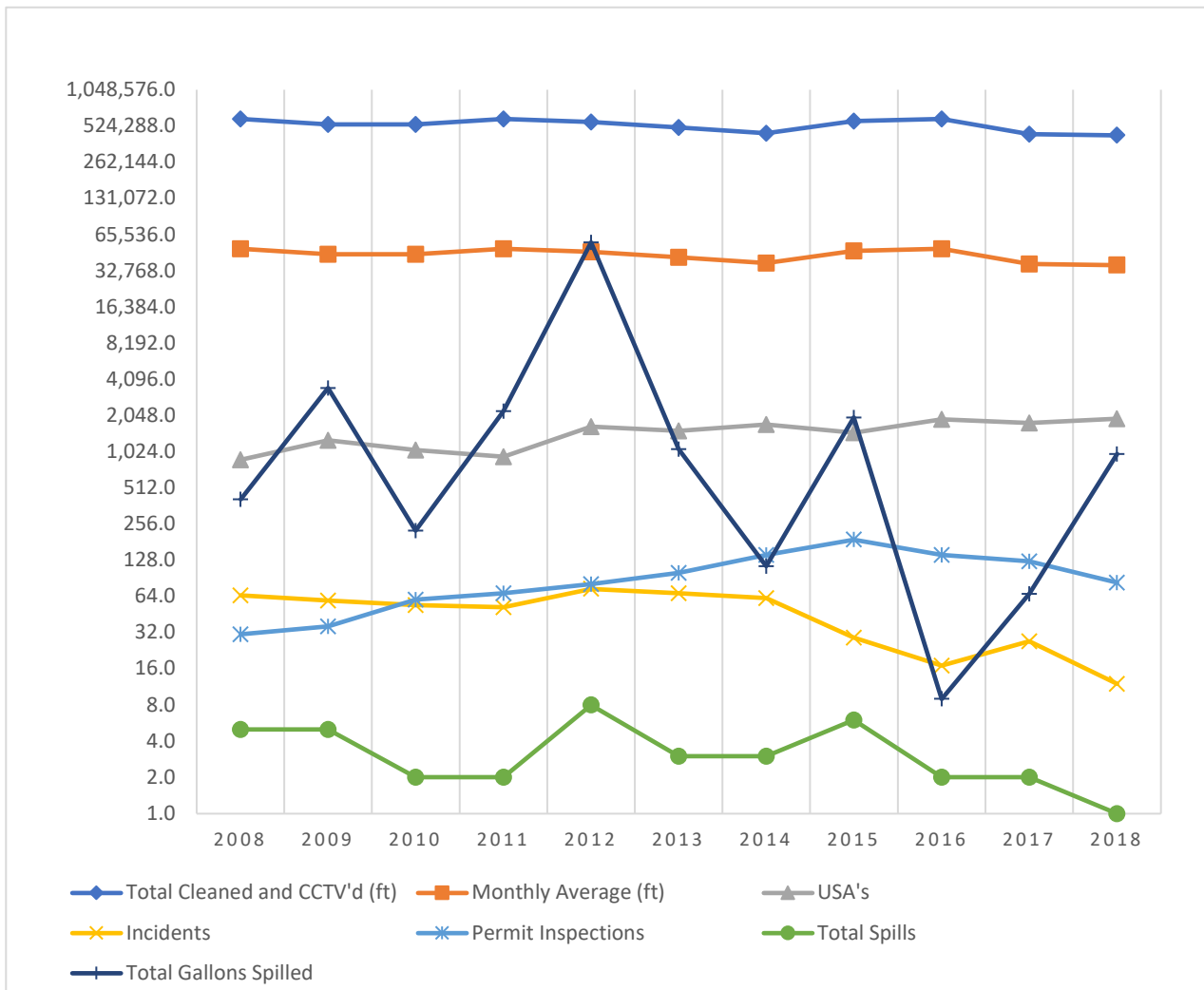
Du-All has conducted safety training for numerous topics. The safety topics that were presented in 2017 are in **Table 7**.

Lateral Assistance Program:

The lateral assistance program continues to be very successful with a total of \$91,849 loaned to district homeowners in the 2017 calendar year.

2018 Annual Report Footage Chart

Calendar Year	Total Cleaned and CCTV'd (ft)	Monthly Average (ft)	USA's	Incidents	Permit Inspections	Total Spills	Total Gallons Spilled
2008	597,320	49,769	875	65	31	5	409
2009	538,127	44,844	1,272	59	36	5	3,455
2010	535,844	44,654	1,053	54	60	2	225
2011	596,551	49,713	927	52	68	2	2,220
2012	561,940	46,828	1,645	74	81	8	56,190
2013	505,587	42,132	1,521	68	100	3	1,073
2014	452,649	37,721	1,721	62	141	3	114
2015	573,209	47,767	1,467	29	190	6	1,964
2016	597,656	49,805	1,896	17	141	2	9
2017	444,989	37,082	1,773	27	125	2	67
2018	436,928	36,410	1,918	12	83	1	975



AREAS OF CONCERN

RATING: Severe = 5 Poor = 4 Fair = 3

(2005 - 2018)

MH Numbers	Street	Problem	Date found	Footage	Rating	YEAR REPAIRED	Footage Comp.
G010.03+G010.01	Hawthorne	Line corrugated with rust - neck down to 4"	4/21/2006	19	5		
G015.03+G015.01	Adrian Terrace	source of TDS - deleted from 2012 project		42	4		
G015.07+G015.03	Adrian Terrace	source of TDS - deleted from 2012 project		100	4		
G021.05+G021.01	Descanso	Heavy I&I from 3 laterals - total 25-35 gpm	2/17/2011		5	2011	221
G021.07+G021.05	Descanso	I&I Lateral right 233.8' .5gpm, lateral left .5gpm	2/17/2011		4	2011	261
G021.09+G021.01	Descanso	H2S eating away at the pipe	2/7/2012	204	3		
G021.25+G021.23	Estancia Way	Deleted from 2012 project - source of TDS		212	4		299
G021.47+G021.43	Estancia Way	Large, septic belly at 10' downstream - ACP	4/12/2013			2013	
G021.31+G021.23	Estancia Way	Constriction at openings - can't tv, camera won't fit	7/16/2014	240	4		
G030.01+PS24	Vendola	Heavy iron buildup, pipe in bad shape - needs to be replaced	7/17/2014	45	5		
G031.11+G021.45	Adrian - Intertie					2009	
G031.13+G031.03	Estancia Way	Bellied line, grease	7/21/2010		3	2011	262
G031.15+G031.13	Estancia Way	Bellied line, grease <i>paving issue - pm changed from 6 months</i>	7/21/2010	295	4		
G033.13+G033.07	Sunny Oaks	Severe offset @ 148.1' - can't get camera thru	6/27/2007	148	4		
G034.05+G034.03	Pt. Gallinas	Bad offset @ 20'	10/14/2010	153	4		
M000.31+M000.29	St. Vincents	I&I 3 gpm	8/10/2005		4	2013	288
M000.45+M000.47	St. Vincents	Could be 100 gpm in heavy flows	7/14/2006		5	2013	410
M000.45+M000.43	St. Vincents	capacity	8/1/2013			2013	328
M000.43+M000.41	St. Vincents	capacity	8/1/2013			2013	387
M000.41+M000.39	St. Vincents	capacity	8/1/2013			2013	383
M000.39+M000.37	St. Vincents	capacity	8/1/2013			2013	386
M000.37+M000.39	St. Vincents	capacity	8/1/2013			2013	278
M000.35+M000.33	St. Vincents	capacity	8/1/2013			2013	299
M000.33+M000.31	St. Vincents	capacity	8/1/2013			2013	250
M000.31+M000.29	St. Vincents	capacity	8/1/2013			2013	290
M000.29+M000.27	St. Vincents	capacity	8/1/2013			2013	161
M000.27+M000.25	St. Vincents	capacity	8/1/2013			2013	263
M000.25+M000.23	St. Vincents	capacity	8/1/2013			2013	299
M000.23+V060.01	St. Vincents	capacity	8/1/2013			2013	299
V060.01+V060.03	St. Vincents	capacity	8/1/2013			2013	255
M000.51+M000.49	Miller creek / US 101	corrugated pipe	5/16/2006	411	4		
M000.49+M000.47	Miller Creek . US101	Can't flush or TV (chunks of corrugated steel and tar)	4/25/2013	409	4	<i>hera stuck 8-5-13</i>	
M000.63+M000.61	Miller Creek	Lots of roots	2/22/2013	362	3		
M001.37+M001.35	Appleberry	<i>I&I - on moratorium list - paved Aug 2011</i>	11/26/2007	180	3		
M001.57+M001.55	Lucas Valley	2 gpm of I&I - crack at 200'	2/29/2008	285	4		
M001.61+M001.59	Lucas Valley Rd	6 joints have I&I total of 10 gpm	3/3/2008		5	2013	266
M001.63+M001.61	Lucas Valley Rd	5 gpm of I&I	3/3/2008		3	2013	270
M001.71+M001.69	Lucas Valley/Mt Lassen	I&I 7-10 gpm	3/21/2007		5	2013	192
M003.09+M003.07	Grande Paseo					2009	70
M003.09+M003.11	Grande Paseo					2009	170
M005.23+M005.21	Mt Rainer	Very small roots - cracks in pipe, can be easily maintained	12/30/2011	191	3		
M005.29+M005.27	Mt. Burney	Lots of offsets, roots - 27 PMs in 8 years	6/24/2014	260	4		

M011.11+M011.09	Cobblestone Dr	Protruding Tap at 261' unable to TV	8/4/2011	261	4		
M011.21+M011.19	Blackstone Ter	Severe crack @ 288' & deformed pipe (top of pipe)	9/12/2007	340	5		
M011.27+M011.05	Deepstone	Break in pipe at end of line	9/23/2011	295	3		
M012.03+M012.02	Heatherstone	Multiple cracks and fractures - paved Aug 2012	9/18/2007	313	5	2016	313
M012.47+M012.45	Johnstone	Lots of offsets - unable to TV - use push camera	5/16/2012	209	3		
M013.01+M000.61	Blackstone Dr	Roots and grease - 28 pms since 2005 - easy to maintain	1/15/2013	223	3		
M013.11+M013.09	Flagstone Easement	Severe offsets	5/4/2006	60	5		
M013.19+M013.01	90 Blackstone Dr	laterals/MH with I&I 7 gpm	4/5/2006	150	5		
M014.01+M060.02	Windstone	Offset @ 32.9' -line 1/2 clay, 1/2 asbestos	4/17/2006	260	4		
M015.03+M015.01	Opalstone	Bad root problem (can be maintained) - 25 PMs since 2005	1/15/2013	288	4		
M016.07+M016.05	Peachstone Ter	Crack at 200' next to right lateral - could be spot repaired	9/12/2011	321	3	2016	313
M016.09+M016.07	Peachstone	Cracks at 157' and 175' do not rod	10/11/2007	327	5	2016	338
M016.21+M016.19	Miller Creek Rd	End of line plug has shifted, exposing large cavity	9/29/2011	151	5		
M017.07+M017.05	Grande Paseo	I&I	2/2/2006	255	3		
M017.11+M017.07	Grande Paseo					2009	130
M017.25+M017.13	Marinwood Ave	Belly in line = 24 PMs from 2005-2012 - maintainable	3/12/2012	135	4		
M018.13+M018.11	Roundtree	All laterals have I&I (1-4 gpm)	12/5/2012	72	3		
M021.03+M021.01	Sandstone Ct	Roots -37 pms since 2005 - easy to maintain	6/27/2013	93	3		
M021.05+M021.03	Sandstone Ct	Roots - 37 pms since 2005 - easy to maintain - paved Dec 2001	6/27/2013	97	3		
M031.05+M031.03	Miller Creek	Crack all the way through	10/17/2007	53	4		
M031.09+M031.07	Miller Creek @ Queenstone	Roots - numerous PMs (27 pms from 2005-2011)	3/12/2012	186	4		
M032.03+M032.01	Miller Creek Rd	Crack at 107', soil visible 12 o'clock I&I .5gpm	9/15/2011	268	5		
M032.09+M032.07	Queenstone Ct	Hole at beginning of line	10/15/2007	114	5		
M032.21+M092.13	Mt Shasta	Needs to be flushed every 6 months	3/14/2007	167	4		
M036.07+M036.05	Blackberry	I&I		312	4		
M036.29+M036.28	Danberry Ln	Broken rodhole riser, hole in bottom	10/13/2011	158	4		
M037.01+M001.35	Danberry					2007	146
M050.07+M050.05	Las Gallinas Ave	Bad offset at last joint before drop structure	8/15/2007	295	5		
M051.01+M050.03	Las Gallinas& Lucas Valley	severe roots - rodded and flushed annually	10/6/2009	200	4		
M052.21+M052.15	Corte Miguel	Repair made with tarpaper & cement? Paved 2014	7/3/2007	140	5		
M060.09+M060.10	Old Lucas Valley/Canyon Oak	Bad I&I estimate 5 gpm in heavy rains	8/10/2005	200	5		
M081.43+M001.14	Appleberry	I&I .5 gpm	3/2/2011	140	4		
M082.15+M082.11	Idylberry Rd	I&I 3 gpm	1/19/2010	170	3		
M085.07+M085.05	Jeannette Prandi					2007	293
M087.01+M001.63	Jeannette Prandi					2009	180
M087.03+M087.01	Jeannette Prandi					2009	
M087.04+M087.03	Jeannette Prandi					2009	129
M087.05+M087.04	Jeannette Prandi					2009	217
M087.07+M087.05	Mt Lassen Dr	Maintainable - 24 PMs since 2005 - roots	10/31/2013	210	4		
M087.41+M087.37	Mt. Palomar	1-3 gpm I&I in MH M087.32	3/22/2012	105	3		
M091.01+M005.06	Idylberry Rd	Belly and roots and grease	2/1/2012	43	3		
M091.03+M091.01	Idylberry	Bad offset and belly		159	4		
M091.19+M091.17	Pike Peak Dr	I&I 4' downstream from M091.19	2/1/2008	211	4		
M092.01+M005.06	Mt Shasta	Offset @ 130' - 30% closed off	1/17/2012	170	4		
M092.13+M092.03	Mt Shasta Dr	Heavy roots - rodding every 6 months	10/25/2011	167	3		
M092.21+M092.13	Mt Shasta Ct	roots - paved July 2012	10/25/2011		5	2011	167

M093.17+M093.15	Mt. Whitney	I&I 6 gpms from 3 spots on line	1/30/2008	293	5		
M093.19+M093.17	Mt. Whitney	I&I 1.5 gpm	1/30/2008	280	3		
M094.05+M094.03	Zephyr Ct	Roots, 3 pms a year to flush and rod	10/7/2014	171	3		
M094.10+M094.09	Mt. Rainer Ct	Can't flush line - whole line is belly - paved Oct 2009	5/26/2009	185	5		
M095.19+M095.17	El Captain Dr	excessive roots - rodded every 4 months Deleted from 2013 pro	12/3/2010	204	4		
M096.05+M096.03	Mt McKinley Rd	Bad roots - cracks in line	1/4/2012	117	4		
M097.05+M097.03	Mt. Burney Ct / Rubicon Ct	excessive roots - 22 PM's in 5 years	3/1/2012	224	4		
M122.15+M122.13	Bridgegate	At 53' pipe section has separated and dropped about 3". Sinkhole above this section	1/24/2012	99	5		
N032.05+N032.03	Los Gamos Rd	1 gpm I&I at 269'	3/24/2008	279	4		
N040.07+N040.05	101 Easement	Bad offset at 81'	3/31/2008	20	4		
N040.09+N040.07	Marin Common's 101 Easeme	Has break right at downstream	3/31/2008	332	4		
N042.03+N042.01	Paul Drive	3 gpm of I&I - line has poor fall	3/26/2008	332	3		
N042.15+N042.13	Paul Drive	belly in line numerous PMs - needs direct burial	4/30/2013	283	3		
N042.33+N042.35	Mitchell	Belly in line - line odd shape	2/2/2007	200	3		
N042.34+N042.33	Mitchell Bl	Long belly	10/17/2011	200	3		
N050.07+N050.05	9 Yosemite Rd	Lot of grease - 1/2 line is under water - belly	7/20/2006	287	4		
S000.07+S000.05	Easement behind Mulligan	I&I approximately .5 gpm	8/15/2005	100	4		
S000.17+S000.15	Mark Twain	I&I Approximately 1.5 pgm	8/15/2005	140	4		
S000.19+S000.17	Mark Twain	1 gpm I&I at 105'	8/15/2005	390	4		
S000.21+S000.19	Mark Twain	Lot of I&I 5 gpm in summer (plugged laterals are leaking)	8/15/2005	420	5		
S000.23+S000.21	Mark Twain	Laterals that are plugged are leaking 1-5gpm in whole line 6-25-	6/25/2012	280	3		
S000.25+S000.23	Mark Twain	Laterals that are plugged are leaking 1-5gpm in whole line 6-25-	6/25/2012	270	3		
S000.27+S000.25	Civic Center Lagoon	Bad I&I plugged lateral on left gusher	7/27/2005	350	5		
S000.33+S000.31	Hill behind Jail at Civic Center	Full of spots of I&I - BB	4/17/2006	484	4		
S000.35+S000.33	Civic Center	5-10 gpm of I&I - paved October 2001	7/22/2013	451	4		
S000.37+S000.35	Marin County Corp yard parking lot	Lots of grit in line	7/2/2006	54	5		
S000.43-S000.41	Las Gallinas and Merrydale	15" trunkline has three large leaks 20gpm	1/19/2006	184	5		
S000.44 - S000.43	Las Gallinas and Merrydale	2-5 gpm	1/19/2006	180	5		
S111.01+S121.11	Las Flores					2007	320
S000.61+S000.59	185 Walter Place	I&I at 17.8 feet at joint	1/19/2006	60	4		
S010.21+S001.19	Vendola Dr	10-15 gpm I&I in bypass paved 2014	2/20/2009	171	4		
S030.17+S030.11	N San Pedro Rd	rodded and flushed every year	7/1/2009		4	2013	300
S030.19+S030.17	N San Pedro Rd	rodded and flushed every year - IAG every month	7/1/2009		4	2013	266
S031.39+S031.37	Oak Crest Dr	Bad offsets	7/10/2012	146	3		
S032.23+S032.21	Crestview Way	roots - 27 pms since 2005	8/6/2012	143	3		
S040.17+S040.13	Chalda Ct	channel too tight to ITV	1/19/2009	235	4		
S040.19+S000.11	Schmidt Ln	offsets - camera got stuck in line	6/18/2012	300	5		
S043.03+S043.01	Meriam Dr	Can't rod - pipe cracked at 180'	7/11/2008		5	2011	209
S041.15+S041.13	Northview	offsets 118' and 130'	7/18/2008	130	4		
S043.33+S043.15	Woodoaks Dr	Severe offset - has be be IROd - camera truck can't do,able to m	6/19/2012	73	4		
S043.21+S043.13	Woodoaks Dr	Offset at 52.3' so severe camera can't make it	7/28/2005	220	5		
S045.03+S045.01	Holmes and Madison	Rough concrete in MH -no fall in line - paving issue, deleted fro	2/17/2011	320	4		
S046.09+S046.07	Roosevelt	Little crack and small roots in the whole line	9/7/2012	165	3		
S046.19+S046.17	170 N San Pedro Rd	cracked pipe close to MH	5/2/2006	194	5		
S046.23+S046.13	Roosevelt	40% collapsed pipe			5	2011	151

S046.27+S046.15	160 N San Pedro	Small cracks and fractures	8/15/2006	273	4		
S051.05+S051.03	Oxford Dr	roots - 26 Oms since 2005	6/20/2012	260	4		
S051.09+S051.07	Sidney	Bad roots at every joint	6/20/2007	163	4		
S051.11+S051.09	Sidney	Bad roots at every joint	6/20/2007	301	4		
S051.15+S051.07	Sidney easement	Bad roots at every joint	6/20/2007	207	4		
S081.03+S081.01	Garden Ave					2009	100
S081.07+S081.05	Linda Ave					2009	129
S081.07+S081.31	Linda Avenue					2007	140
S081.09+S081.07	Linda	Offsets, roots - had to flush to TV - almost got stuck Paving issu	3/15/2012		4	2013	335
S081.11+S081.09	Linda Avenue	Line has 15 offsets, broken pipe Paving issue	15-Aug		5	2013	262
S081.15+S081.13	Garden Ave	Offset at 260', pipe is cracked	8/3/2010		5	2013	260
S081.29+S081.27	Garden easement	Unable to maintain bottom 20'	8/3/2010		5	2011	150
S081.27+S081.05	Garden easement	Difficult to maintain	8/3/2010			2011	230
S081.31+S081.06	6 Linda Ave	Unable to maintain - needs to be pipebursted	8/15/2006		5	2007	140
S081.33+S081.31	Garden easement	Break at 87' and 149' - soil visable	8/15/2008		5	2011	250
S081.41+S081.37	Carmel Ct	.25 gpm I&I in dry weather	4/26/2005	300	5		
S082.07+S082.01	Garden Ave					2009	115
S082.13+S082.09	Garden Ave easement					2009	412
S082.15+S082.09	Garden Ave & Portola	roots - moderate deterioration Paving issue	3/14/2012		4	2013	225
S082.17+S082.15	12 Portola	Pipe broken in couple locations, roots - might need to be direct	10/16/2013	125	4		
S083.17+S083.15	Tarrant Ct	Severe roots, severe offset at downstream MH, crack in pipe	8/15/2008			2011	168
S083.19+S083.15	Portola	Severe roots and offsets	5/28/2008	140	4		
S083.23+S083.21	Tarrant Ct	Lots of cracks and all laterals on right are abandone	1/6/2012	181	4		
S083.49+S083.47	North San Pablo Ave	Broken pipe at 155' - 37 PMs since 2005)	6/3/2008	170	5		
S083.51+S083.49	30 N San Pedro	Roots in line - SSO 10-17-13 due to roots	10/18/2013	60	4		
S083.53+S083.52	Marin Civic Center	Offsets	5/5/2008	60	5		
S083.61+S083.51	N San Pablo Rd	Roots	5/4/2012	75	4		
S087.11+S087.09	Mt. Lassen	5 offsets			5	2011	220
S087.09+S087.07	Mt Lassen	10 gpm I&I			5	2011	350
S091.17+S091.01	Jefferson St					2007	377
S091.05+S091.03	Madison Ave/Washington	I&I at 158' and rodhole = 2gpm	1/10/2008	290	3		
S091.19+S091.17	Jefferson St	15 gpm I&I	1/10/2008		5	2011	380
S091.23+S091.19	Jefferson St	15 gpm I&I	1/10/2008		5	2011	120
S101.01+S000.43	Redwood Hwy Frontage	I&I 2 gpm - from capped lateral at 92'	8/29/2005	320	4		
S101.11+S100.13	Merrydale Rd	Pipe to tight for 8" had to use 6" camera - pipe has bad offset a t approx 6' from downstream MH	5/4/2011	190	4	2015	
S101.15+S101.13	Merrydale Rd	Unable to ITV or IRO always underwater	4/12/2011		5	2013	230
S101.19+S101.15	Merrydale Rd	Unable to ITV - severe offset at 69'	9/10/2014	160	5		
S101.27+S101.19	Pilgrim Wy @ Merrydale	Bad cracks @ 170' from top - deleted fm 2012 project	5/11/2012	188	4		
S101.35+S101.33	Pilgrim Wy @ Merrydale	Bad offset	5/11/2012	40	4		
S101.39+S101.37	Merrydale Rd	Offsets, 90 degree bend, broken pipe	5/11/2012		5	2011	177
S101.43+S101.41	Merrydale Rd	2 holes in pipe 71' and 81' both at 12 clock position-smoke testi	10/14/2013	188	5		
S101.42+S101.45	Los Ranchitos/Pilgrim	clogged drop, offsets, can't ITV	7/27/2011	132	5	2015	
S111.03+S111.01	Las Flores					2007	370
S111.01+S121.11	Las Flores					2007	320
S111.15+S111.01	Mirada	10 gpm	12/28/2005	410	5		

S111.17+S111.15	Mirada	2 gpm	12/28/2005	340	4		
S121.03+S121.01	Easement on Merrydale	Every joint has offset, lots of bellys	7/22/2005		4	2013	400
S121.05+S121.03	Corrillo Ct	Line almost completely under water	12/22/2005		4	2013	112
S121.07+S121.05	Corrillo Ct	Approx 5 gpm I&I	12/22/2005	150	4		
S121.11+S121.09	Las Flores	10 gpm - hole in top of pipe at 218'	12/27/2005	270	5		
S121.15+S121.13	219 Las Gallinas	I&I 10 gpm	1/10/2006	32			
S121.19+S121.17	Las Huertas					2009	165
S121.21+S121.07	Corrillo Dr	Leaking out of joints	12/21/2005	411	5		
S121.23+S121.21	Corrillo Dr	Approx 3 gpm I&I	12/21/2005	290	4		
S121.25+S121.23	Corrillo Dr	Protruding lateral at 106', heavy offsets	7/2/2014	290	4		
S121.27+S121.25	Corrillo Dr	10 gpm	12/27/2005		5	2013	210
S122.01+S120.05	Constance Dr easement	roots, greas - flushed annually	1/15/2008	24	4	2015	
S122.03 S122.01	16 Constance Dr	I&I, bellies, grease	1/23/2006	472	5	2015	
S122.05+S122.03	Constance Dr easement	roots, grease, grit flushed annually	6/23/2008	255	4	2015	
S122.09+S122.07	Constance Dr	Long cracks in pipe	1/22/2013	230	4		
S123.05+S123.03	Merrydale Rd	Belly, grease, unable to TV	11/27/2012	352			
S123.27+S123.25	600 Las Gallinas	Broken pipe			5	2011	200
S132.03+S132.02	Devon Dr @ Dias Wy	Severe offset joint approx 5' downstream frm S132.03	7/15/2014	170	4		
S133.03+S133.01	Don Timoteo Ct	Horrible roots and grease	9/26/2012	221	3		
S133.07+S133.15	Pacheco Ct	channel needs to be reworked can't tv Pacheco ct	1/11/2006	150	4		
S154.13+S154.07	Mariners	.5 gpm	12/22/2005	96	4		
S154.27+S154.29	Mariners Circle	S154.27 has 1.5 gpm I&I at channel	10/15/2009	50	3		
S155.11+S155.09	29 Bridgewater	approximately 7-10 gpm of I&I due to laterals		180	5		
S155.17+S155.15	Waterside Cir /PS2	I&I at 46.1' - bad separated joint	7/26/2005	140	5		
S162.09+S162.08	Ranch Rd	Offset at upstream MH too sever to get thru	3/2/2006	190	3		
S162.15+S162.13	46 Ranch Rd	Severe offset last foot of line.	8/23/2006	102	5		
T000.77+T000.75	Del Ganado	Roots - easily maintained	2/13/2012	285	3		
T000.79+T000.77	Del Ganado	Roots - easily maintained	2/13/2012	295	3		
T000.81+T000.79	Del Ganado	Roots - easily maintained	2/13/2012	285	3		
T000.83+T000.81	Del Ganado	2-5 gpm of I&I - roots, easily maintained	3/10/2008	298	3		
T000.85+T000.83	Del Ganado	roots at 280' - easy to maintain	2/13/2012	315	3		
T012.09+T012.07	Channing Wy	Done				2016	161
T013.13+T013.11	Redwood Highway	Pipe is badly broken cracked in first 5'	4/25/2008	286	4	2015	
T015.05+T015.03	Professional Center Pkwy	10 gpm I&I and a couple of offsets (maintainable)	4/16/2012	279	4	2015	
T015.14+T015.13	Professional Center Pkwy	severe offset at 74'	7/30/2009	187	4	2015	
T015.17+T015.15	Channing Wy	Offset at 42' - flusher nozzles have hard time climbing hill - roots	3/9/2012	193	4	2015	
T015.19+T015.17	Channing Wy	Offset at 100' from upstream - camera can't be pulled back - IRC	3/9/2012	245	3	2015	
T015.25+T015.01	Professional Center Pkwy	Severe offset at 190' from upstream can be maintained - roots	3/12/2012	300	4	2015	
T015.29+T015.27	Las Colindas	Done				2005	127
T017.03+T017.01	Redwood Hwy	Crusty pipe - can't clean	6/11/2007	46	5		
T025.03+T025.01	Oleander Dr	Bad offset at 230'	4/21/2011	230	5	2016	
T027.07+T027.05	Orange Blossom	Multiple cracks from 162' to 176' fm T027.07	5/17/2007		5	2013	276
T027.09+T027.07	Orange Blossom	32 PMs since 2005 - rodded every 6 months	3.28.2013	120	5		
T031.01+T030.07	4 Points Sheraton	Done				2009	120
T030.23+T030.21	Northgate trunk line	Techite pipe CIPP	6/20/2011		5	2011	408
T030.21+T030.19	Northgate trunk line	Techite pipe CIPP	6/20/2011		5	2011	143

T030.19+T030.15	Northgate trunk line	Techite pipe CIPP	6/20/2011		5	2011	150
T030.15+T030.13	Northgate trunk line	Techite pipe CIPP	6/20/2011		5	2011	324
T030.13+T030.11	Northgate trunk line	Techite pipe CIPP	6/20/2011		5	2011	325
T030.11+T030.09	Northgate trunk line	Techite pipe CIPP	6/20/2011		5	2011	186
T030.09+T030.07	Northgate trunk line	Techite pipe CIPP	6/20/2011		5	2011	398
T030.07+T030.05	Northgate trunk line (under h	Techite pipe CIPP	6/20/2011		5	2011	240
T032.03+T032.01	Las Gallinas	I&I 1.5 gpm - multiple cracks, soil visable, roots	12/7/2005	300	4		
T035.01+T035.03	La Perdiz Ct	Direct burial/bad belly from 39' to 149'	12/12/2008	189	4		
T035.03+T035.01	La Perdiz - easement	sag in line 43' to 158'. Debris & grease	4/12/2006	189	5		
T035.07+T035.05	El Faisan	roots - portable rod/laterals all severely offset from main	11/26/2012	227	5		
T035.19+T035.17	La Perdiz Ct	20 gpm I&I from joint at 160' - 1' from downstream MH	11/21/2012	161	4		
T035.20+T035.19	El Faisan	Difficult to maintain	9/28/2011		5	2011	40
T035.21+T035.20	El Faisan	Done - asbestos				2009	117
T035.23+T035.21	El Faisan	Bad offset at 75' from downstream	8/8/2011			2013	120
T035.25+T035.21	El Faisan	Done (Root growing into MH from bad connection - pipeburst 2009)				2009	140
T035.27+T035.25	El Faisan	Difficult to maintain	9/28/2011			2011	102
T040.01+T000.29	Las Gallinas Ave	I&I - capacity issue - numerous SSOs	9/19/2011	182	5	11200	Project
T040.03+T040.01	Las Gallinas Ave	I&I - capacity issue - numerous SSOs	9/19/2011	60	5	11200	Project
T040.04+T040.03	Las Gallinas Ave	I&I - capacity issue - numerous SSOs	9/19/2011	113	5	11200	Project
T040.05+T040.04	Las Gallinas Ave	I&I - capacity issue - numerous SSOs	9/19/2011	83	5	11200	Project
T040.23+T040.21	254 Nova Albion	1 gpm I&I (during summer)	6/2/2006	218	3		
T041.15+T041.13	Las Gallinas Ave	Unable to TV - can't get thru offset	4/17/2007	340	5		
T042.07+T040.17	Montecillo Rd	Severe Fracture at 12 o'clock, running length of pie	10/2/2014	300	4		
T042.01+T040.23	Le Claire Ct	Loose joint - pipe has roots	9/7/2012	183	3		
T043.11+T043.12	El Faisan Easement	Steep easement, under water, employee injured - Asbestos	9/28/2011		5	2013	128
T043.12+T043.13	El Faisan Easement	Steep easement, under water, employee injured - Asbestos	9/28/2011		5	2013	57
T043.13+T043.15	El Faisan Easement	Steep easement, under water, employee injured - Asbestos	9/28/2011		5	2013	160
T043.15+T043.17	El Faisan Easement	Steep easement, under water, employee injured - Asbestos	9/28/2011		5	2013	100
T043.17+T043.19	El Faisan Easement	Steep easement, under water, employee injured - Asbestos	9/28/2011		5	2013	200
T043.19+T043.21	El Faisan Easement	Steep easement, under water, employee injured - Asbestos	9/28/2011		5	2013	120
T043.21+T043.23	El Faisan Easement	Steep easement, under water, employee injured - Asbestos	9/28/2011		5	2013	50
T043.25+T043.13	El Pavo Real	No access	1/17/2017		5		
T043.37+T043.29	El Faisan Easement	Steep easement, under water, employee injured - Asbestos	9/28/2011		5		
T043.39+T043.37	El Faisan Easement	ACP, roots, easement - difficult to maintain	11/27/2012	80	4	2015	
T043.41+T043.39	El Faisan Easement	Extreme roots - needs to be portable rodded	11/27/2012	110	4	2015	
T043.43+T043.41	El Faisan Easement	Roots at 22' - needs to be portable rodded	11/27/2012	131	4	2015	
T044.01+T040.25	25 Esmeyer	Severe offset 18' before end of line	9/28/2006	310	4	2015	
T044.21+T044.11	Tamarack					2007	293
T044.31+T044.29	72 Wallace Way	Severe offset at 203.3'	1/18/2006	288	5		
T050.11+T050.09	Arias St	I&I 3 gpm	3/4/2011	300	4	2015	
T050.27+T050.23	Trellis	10 gpm I&I at 145' Road paved 2013	2/12/2008	150	5	2015	
	Fowler	I&I 3 gpm Removed from 2014 rehab project - paved 2013	12/19/2005	251	4		
T052.17+T052.16	Fowler	I&I 5 gpm Repaired by Linscott 02/09	12/19/2005		5	2009	144
T052.33+T052.32	19 Santa Clara	offset beginning of line - can't camera		43	5		
T052.34+T052.33	Santa Clara Ct	Bad offsets in easment	3/30/2006	99	4		
T054.11+T054.07	Elda Dr	Hard access, bad roots, debris buildup	11/26/2012	91	3	2015	

T054.09+T054.11	Elda Dr	Hard access, bad roots, debris buildup	11/26/2012	156	3	2015	
T054.13+T054.09	Elda Dr	Hard access, bad roots, debris buildup	4/30/2013	95	4	2015	
T054.61+T054.09	Elda Dr	Hard access, bad roots, debris buildup	11/26/2012	64	3	2015	
T054.38+T054.11	Elda					2005	313
T054.13+T054.11	Elda Dr	33 PM's from 2005 - 2012	4/25/2012	96	4		
T054.15+T054.13	47 Elda Dr	Crack at 26' on the bottom of pipe	3/30/2006	30	4		
T054.39+T054.38	Elda Dr					2007	190
T054.47+T054.01	118 Trellis	Fractures @ 36.9' pipe is deformed	1/14/2006	355	5		
T054.49+T054.47	Trellis Dr	Line done 2007 - lateral 134 Trellis pulling away - street moratorium				2007	340
T054.53+T054.49	Wellbrock					2007	272
T062.23+T062.21	624 Tanbark	I&I - crack and fractures @ 143' 5 gpm	1/14/2006	147	4	2016	
T071.03+T071.01	Holly Dr	Tap at 63'	5/5/2011	382	4		
T071.04+T071.03	Holly Dr					2009	240
T071.07+T071.05	398 Holly	I&I from cracks & fractures in line 5-10gpm	4/3/2006	232	5		
T071.17+T071.07	Holly Dr	Bad offset at beginning and roots throughout - maintainable	1/24/2013	93	3		
T071.27+T071.25	Hibiscus Wy	Multiple cracks with roots @ 8' from T071.25	5/21/2007	322	4	2015	
T071.31+T071.01	Hickory Ln	Lots of offsets and roots - protruding lateral	5/16/2007	290	5	2015	
T072.01+T000.37	Hickory	Offsets - missing piece of pipe	11/13/2012	240	5	2015	
T073.03+T073.01	Las Pavadas	Has a bad offset must be TvD from both sides	7/2/2013	220	3		
T073.05+T073.03	Las Pavadas	Bad offset at 176'	8/1/2011	260	4		
T073.07+T073.05	Las Colindas	severe offsets	8/1/2011		5	2011	350
T073.19+T073.17	Heather Wy	Massive roots - rootcut done every 4 months	5/16/2012	330	4		
T073.27+T073.11	Via Horqueta	lots of cracks and roots	1/25/2006	122	4		
T073.29+T073.27	Via Horqueta	Cracks and roots (22 pms by 2012)	3/31/2006		5	2013	100
T073.31+T073.29	Via Horqueta	Cracks and roots	3/31/2006		5	2013	122
T073.33+T073.13	Heather Wy	wye lying sideways at 107.4 feet	3/1/2006	107	4		
T074.11+T074.09	Los Colindas/Woodbine	Severe offset - SSO 10-26-07	10/28/2007	277	4		
T074.12+T074.10	Woodbine	Bad broken spot @ 250'	2/7/2011	316	5		
T074.13+T074.11	Las Colindas					2005	295
T074.15+T074.13	Las Colindas					2005	292
T074.19+T074.17	Las Colindas					2005	140
T074.31+T074.23	564 Whitewood Dr	Offset at every joint	3/31/2006	120	4		
T074.33+T074.31	Whitewood Dr	Roots and offsets - 26 pm since 2005	8/7/2012	234	4		
T074.41+T074.37	Las Colindas	Severe roots	4/23/2007	245	4		
T074.51+T074.11	Las Colindas					2005	130
T075.09+T075.07	Woodbine	Broken & fractured pipe and lateral at 258'	4/12/2011	318	4		
T076.01+T000.59	Del Ganado	Scotty's Market - can't run blades thru - bad pipe - unable to ITV	1/19/2012	300	4		
T081.03+T081.01	Park Ridge easement	Easement, numerous PMs to maintain			5	2011	140
T082.27+T082.25	Montevideo	Lateral 59 Montevideo has dropped about 3" at main creating offset	6/7/2011	287	5		
T090.05+T090.03	Las Raposas Rd	Obstruction in pipe - can't ITV	4/19/2007	360	5		
T091.13+T091.11	Las Raposas Rd	Lots of roots and offsets on easement	10/24/2011		5	2013	92
T091.15+T091.13	Las Raposas Rd	Lots of roots and offsets on easement	10/24/2011		5	2013	75
T091.17+T091.15	Las Raposas Rd	Lots of roots and offsets on easement	10/24/2011		5	2013	80
T091.19+T091.17	Las Raposas Rd	Lots of roots and offsets on easement	10/24/2011		5	2013	70
T091.21+T091.19	7 Galway Lane	cracked pipe	3/30/2006		4	2013	110

T091.31+T091.29	Tralee easement	Unable to flush entire line			5	2011	215
T091.33+T091.01	735 Las Colindas	2-3 gpm I&I - lateral		300	4		
T091.35+T091.33	Knocknaboul					2007	220
T091.37+T091.35	Galway/Knocknaboul Easement					2009	320
T091.39+T091.37	Galway/Knocknaboul Easement					2009	220
T091.41+T091.39	Galway/Knocknaboul Easement					2009	180
T091.43+T091.41	Galway/Knocknaboul Easement					2009	80
T091.45+T091.37	Galway Easement					2007	148
T091.59+T091.57	Las Colindas					2005	240
T092.05+T092.03	Penny Royal	2-5 gpm of I&I	3/5/2008	300	3		
T092.07+T092.05	Penny Royal	Crack at 150' - camera can't make it through	2/8/2012	245	3.5		
T092.09+T092.07	Penny Royal	2-5 gpm of I&I	3/5/2008	245	3		
T092.11+T092.09	Penny Royal	1-2 gpm I&I at 118'	2/8/2012	295	3		
T092.13+T092.07	Las Colindas					2005	230
T092.15+T092.13	Las Colindas	Lots of roots - easily maintained	9/20/2012	300	3		
T092.19+T092.13	Las Colindas					2005	300
T092.27+T092.25	Pine Lane	2-5 gpm of I&I	3/6/2008	251	3		
T092.29+T092.27	Pine Lane	I&I in laterals & main 2-5 gpm	3/6/2008	254	3		
T095.09+T095.07	Las Colindas	moderate crack at 271'	8/1/2011	300	3		
T095.11+T095.09	Las Colindas	Las Colindas				2005	225
T101.33+T101.06	Montecillo Rd	Large offset - SSO February 2009			5	2011	334
T101.35+T101.33	Montecillo Rd	Roots at most joints, first 100' downstream from T101.35	7/31/2014	299	3		
T101.45+T101.13	Mahogany	roots at every joint (20 pm's from 2005-1012)	7/26/2007		5	2013	198
T101.47+T101.45	Mahogany	lots of roots (42 pm's since 2005 to 2012)	8/1/2007		5	2013	151
T101.49+T101.47	Mahogany	Lots of roots - easement (35 PM's from 2005-1012)			5	2013	158
T101.53+T101.65	Mahogany	Line has root intrusion (37 PM's since 2005-2012)	8/1/2007		5	2013	152
T101.65+T101.49	Mahogany	Bad roots (37 PM's from 2005-2012)	8/1/2007		5	2013	118
T101.61+T101.59	59 Mahogany	Easement, numerous PMs to maintain	8/1/2007		5	2011	80
T101.59+T101.57	42 Mahogany	Easement, numerous PMs to maintain	8/1/2007		5	2011	120
T101.57+T101.55	Mahogany	Easement, numerous PMs to maintain	8/1/2007		5	2011	220
T101.55+T101.45	6 Mahogany	Easement, numerous PMs to maintain	8/1/2007		5	2011	85
T102.21+T102.19	Montecillo Rd	No Rodhole and lots of roots (27 PMs since 2005)	2/26/2009	170	3		
T102.25+T102.23	Las Ovejas	Offset and roots	8/3/2007	95	5		
T102.27-T102.25	Beechnut Easement	Many severe offsets & gaps between joints	2005	270	5		
T102.33+T102.32	Beechnut Court	39 PMs since 2005 - able to maintain	7/23/2013	240	3		
T102.35+T102.33	Beechnut Court	23 PMs since 2005 - easy to maintain	7/23/2013	111	3		
T102.37+T102.35	Beechnut Court	23 PMs since 2005 - easy to maintain	7/23/2013	147	3		
T102.32+T102.31	Beechnut Court	39 PMs since 2005 - able to maintain	7/23/2013	112	3		
T113.01+T000.85	Duran Dr	I&I at joint 13.6' = 1 gpm right lateral 44' =2 gpm	2/28/2008	210	3		
T113.05+T113.03	Duran Dr	I&I - 1 gpm	12/5/2005	250	4		
V010.01+PS	Mclnnis Park Golf Course	2 gpm I&I	2/14/2008	25	3		
T111.03+T111.01	Las Flores	Separated Pipe	9/21/2017	370	4		

**DISTRICT BOARD**

Megan Clark

Rabi Elias

Russ Greenfield

Craig K. Murray

Judy Schriebman

DISTRICT ADMINISTRATIONChris DeGabriele,
General ManagerMichael Cortez,
District EngineerMel Liebmann,
Plant ManagerSusan McGuire,
Administrative Services ManagerGreg Pease,
Collection System/Safety Manager

February 22, 2018

Dear Plumber or Contractor:

As the operators of the Las Gallinas Valley Sanitary District wastewater treatment plant and collection system, it is necessary that we obtain pertinent information as it applies to our system.

We are requesting that all plumbers who work on laterals associated with the District's lines adhere to the procedure outlined in the District Specifications. Also, if you push debris that could contribute to a blockage into the main line while you are performing maintenance on a homeowner's lateral it is your responsibility to remove the debris. If for some reason you are unable to do that, please contact the District as soon as possible. We have experienced sewer overflows which are due to lateral debris being pushed into the main lines and being left there. We will assist you in removing the debris from the main line at no charge.

Please be aware that we need to be notified if an overflow occurs due to the District's lines. It is a requirement of the State that these overflows be reported. If you respond to such a situation, call the District immediately at 415-472-1734. During off-hours, the answering service will take your message and contact us.

In addition, this is an opportunity to remind you that if you are performing repair work on a private sewer lateral or installing a new lateral, you need to have a permit and an inspection completed by the District. **As of March 1, 2016, the District changed the lateral permit application process. Plumbers and homeowners are still able to submit a COMPLETE permit on-line, by fax or in person at the District, however, applicants will now be required to have a valid Permit Number before any work begins. A permit number can be obtained in person or by phone, once the application has been submitted. Included in this correspondence is a blank permit form for you to use. Please review the permit and ensure all future submittals are complete. Incomplete permits will no longer be accepted.** This permit has changed so please destroy any previous blank permits you have. There is no cost associated with this permit and inspection. The inspection will include a water/air test and we require 24-hour notice before you are ready for an inspection. **If work is being conducted in the City or County Right-of-Way, the appropriate encroachment permits need to be obtained and presented when applying for a lateral permit with the District.**

We have developed a Lateral Assistance Program that will enable homeowners to borrow money from the District for repair or replacement of their lateral. Should a homeowner request that you televise and record their lateral be sure to question if they will need the recording for the assistance program.

The County and the City have issued moratoriums on the excavation of their streets. If a road has been paved within the last 5 years, they will possibly require additional paving if you dig in the road. There is a 2 year moratorium if digging on a road that has been micro-surfaced. It is

suggested that anyone digging in a street contact the County at 473-6528 or the City at 485-3355 before they dig to see if additional paving will be required.

If you would like a copy of the District's specifications, or have any questions, please call me at 415-472-1734. Thank you for your assistance.

Sincerely,

A handwritten signature in blue ink, appearing to read 'G. Pease', with a stylized flourish at the end.

Greg Pease
Collection System/Safety Manager

Enclosures (2) –Permit Application, Inspection Form



DISTRICT BOARD

Megan Clark
Rabi Elias
Russ Greenfield
Craig K. Murray
Judy Schriebman

DISTRICT ADMINISTRATION

Mark R. Williams,
General Manager
Michael Cortez,
District Engineer
Mel Liebmann
Plant Manager
Susan McGuire,
Administrative Services Manager
Greg Pease,
Collection System/Safety Manager

PERMIT APPLICATION
DISTRICT MAINLINE OR PROPERTY LATERAL
CONSTRUCTION – REPAIR – REPLACEMENT

DATE _____ PERMIT NO. _____

APPLICANT NAME _____ (Plumber or Contractor)
ADDRESS _____
PHONE / FAX _____ / _____

PROPERTY OWNER _____
ADDRESS _____
CROSS STREET _____
PHONE _____ FAX _____

DESCRIPTION OF WORK / METHOD USED / AMOUNT OF FOOTAGE REPLACED:

Check applicable box: Work being performed in public right of way
Work being performed on private property

I AGREE TO THE FOLLOWING:

Will not start work without Approval Permit.

Will post a copy of an approved permit at the job site.

Will have the bedding ½ way up pipe with bands exposed (pipe ½ exposed)

Will have all pipes connected and cleanout installed (where applicable)

Will contact District representative (Greg Pease 472-1734, ext 13) at least
24 hours in advance of inspections (before line is backfilled).

_____ Lateral needs to be water tested with District employee present.

WORK TO START: _____ APPLICANT SIGNATURE _____

*******NOTICE*******

**Permit is not valid until a District Representative issues a valid Permit Number.
The permit number may be obtained at the District Office in person or by phone
(if you have submitted application via fax or email).**



DISTRICT BOARD

Megan Clark
 Rabi Elias
 Russ Greenfield
 Craig K. Murray
 Judy Schriebman

DISTRICT ADMINISTRATION

Mark R. Williams,
 General Manager
 Michael Cortez,
 District Engineer
 Mel Liebmann
 Plant Manager
 Greg Pease,
 Collection System/Safety Manager
 Susan McGuire,
 Administrative Services Manager

LGVSD LATERAL INSPECTION

Permit Number:

Address:

Contractor Performing Repair/Replacement:

Property Owner:

Contractor Phone Number:

Property Owner Phone Number:

Pipe Material (Make/Model): _____

Spot Repair Upper Lower

Pipe Length: _____

Sheer Band Required: YES NO

Trenchless: YES NO

Bands Torqued to Specs: YES NO

Wye Replaced: YES NO

Number of C/O's: _____

Pressure Test: AIR

C/O GPS Coordinates

Start Time: _____ am/pm PSI _____

X: _____

End Time: _____ am/pm PSI _____

Y: _____

PASS/FAIL

Connection to District Main

Pressure Test: Water

X: _____

Start Time: _____ am/pm Level _____

Y: _____

End Time: _____ am/pm Level _____

Date Work Completed: _____

PASS/FAIL

Date Inspected: _____

Time Inspected: _____

Inspector:

Date:

This page intentionally blank

LGVSD LATERAL PERMIT APPLICATION

2017 LOG

PERMIT #	DATE APPLIED	APPLICANT NAME (i.e. contractor)	Prop. Owner Name	Property Address	Prop. Owner Ph no.	WORK BEGIN	WORK END	Date Inspected
2017-0001	01/09/17	Ben Franklin Plumbing	Property Owner Names and Phone numbers are not shown on the on-line version of this table out of respect for privacy.	634 Bamboo Terrace	Property Owner Names and Phone numbers are not shown on the on-line version of this table out of respect for privacy.	01/09/17	01/12/17	01/12/17
2017-0002	01/11/17	Gopher-It Trenchless		104 Corrillo		01/11/17	01/12/17	01/12/17
2017-0003	01/12/17	Pacific Trenchless		1035 Las Gallinas Ave		01/12/17	01/13/17	01/13/17
2017-0004	01/13/17	Pacific Trenchless		1041 Las Gallinas Ave		01/13/17	01/13/17	01/13/17
2017-0005	01/13/17	Pacific Trenchless		1046 Las Gallinas Ave		01/13/17	01/13/17	01/13/17
2017-0006	01/13/17	Joe La Come		302 Las Gallinas Ave		01/16/17	01/17/17	01/17/17
2017-0007	01/16/17	Pacific Trenchless		1045 Las Gallinas Ave		01/16/17	01/16/17	01/16/17
2017-0008	01/17/17	Gopher-It Trenchless		45 Unionstone Dr		01/19/17	01/23/17	01/23/17
2017-0009	01/17/17	Marin Roto-Rooter		105 Corrillo Dr		01/23/17	01/26/17	01/26/17
2017-0010	01/19/17	Linscott Engineering		283 Flagstone Terrace		01/24/17	01/25/17	01/25/17
2017-0011	01/20/17	Gopher-It Trenchless		32 Windstone Dr		01/26/17	02/02/17	02/02/17
2017-0012	01/20/17	Gopher-It Trenchless		1067 Las Raposas		01/25/17	02/14/17	02/14/17
2017-0013	01/20/17	Gopher-It Trenchless		1075 Las Raposas		01/25/17	02/14/17	02/14/17
2017-0014	01/23/17	Challenge Rootet		108 Corrillo		01/24/17	01/24/17	01/24/17
2017-0015	01/25/17	Ben Franklin Plumbing		100 Las Gallinas Ave		01/25/17	01/27/17	01/27/17
2017-0016	01/25/17	Challenge Rootet		11 Corrillo		01/31/17	01/31/17	01/31/17
2017-0017	01/26/17	Challenge Rootet		224 El Prado Ave		01/31/17	01/31/17	01/31/17
2017-0018	01/30/17	PipeSpy Marin		379 Holly Dr		02/16/17	02/28/17	02/28/17
2017-0019	01/30/17	PipeSpy Marin		375 Holly Dr		02/16/17	02/28/17	02/28/17
2017-0020	01/31/17	Challenge Rootet		5 Corrillo		02/06/17	02/06/17	02/06/17
2017-0021	01/31/17	Challenge Rootet		9 Corrillo		02/06/17	02/06/17	02/06/17
2017-0022	02/02/17	Ben Franklin Plumbing		779 Penny Royal Ln		02/03/17	02/15/17	02/15/17
2017-0023	02/03/17	Pacific Trenchless		1070 Las Gallinas Ave		02/03/17	02/10/17	02/10/17
2017-0024	02/01/17	Challenge Rootet		229 El Prado		02/07/17	02/13/17	02/13/17
2017-0025	02/01/17	Challenge Rootet		223 El Prado		02/07/17	02/13/17	02/13/17
2017-0026	02/02/17	Gopher-It Trenchless		25 DeFord		02/03/17	02/06/17	02/06/17
2017-0027	02/08/17	Challenge Rootet		4 Corrillo Dr		02/15/17	02/15/17	02/15/17
2017-0028	02/10/17	Pacific Trenchless		1061 Las Gallinas Ave		02/10/17	02/13/17	02/13/17
2017-0029	02/13/17	Pacific Trenchless		1075 Las Gallinas		02/13/17	02/13/17	02/13/17
2017-0030	02/14/17	Pacific Trenchless		317 Corrillo Dr		02/14/17	02/14/17	02/14/17
2017-0031	02/14/17	Amesos Plumbing		715 Pine Lane		02/14/17	02/15/17	02/15/17
2017-0032	02/16/17	Gopher-It Trenchless		4 Malone Lane		02/20/17	03/03/17	03/03/17
2017-0033	02/15/17	Challenge Rootet		7 Corrillo Dr		02/20/17	02/22/17	02/22/17
2017-0034	02/16/17	Ben Franklin Plumbing		667 Blackberry Lane		02/22/17	02/22/17	02/22/17
2017-0035	02/21/17	Gopher-It Trenchless		655 Bamaboo Terrace		02/21/17	02/22/17	02/22/17
2017-0036	02/22/17	Challenge Rootet		10 Corrillo Dr		02/22/17	02/22/17	02/22/17
2017-0037	02/22/17	Brian Dismuke		590Heather Way		Void	Void	Void
2017-0038	02/28/17	Carlos Medina		399 Miller Creek Rd		03/08/17	04/05/17	04/05/17
2017-0039	03/02/17	Hardiman Construction		101 Edward Ave		03/06/17	03/20/17	03/20/17
2017-0040	03/07/17	Gopher-It Trenchless		595 Thornwood Terrace		03/15/17	03/29/17	03/29/17
2017-0041	03/07/17	Gopher-It Trenchless		599 Thornwood Terrace		03/07/17	03/29/17	03/29/17
2017-0042	03/08/17	Dans Plumbing		358 Holly Dr.		03/09/17	03/09/17	03/09/17
2017-0043	03/14/17	Gopher-It Trenchless		318 Corrillo Dr		03/14/17	03/14/17	03/14/17
2017-0044	03/17/17	Amesos Plumbing		372 Hibiscus Way		03/17/17	03/21/17	03/21/17
2017-0045	03/23/17	Linscott Engineering		805 Descanso Way		03/27/17	04/04/17	04/04/17
2017-0046	03/27/17	Bragg Plumbing		59 Trellis Dr		03/29/17	03/29/17	03/29/17
2017-0047	03/27/17	Gopher-It Trenchless		591 Thyme Place		03/27/17	03/29/17	03/29/17
2017-0048	03/25/17	Hardiman Construction		1110 Via Horqueta		04/04/17	05/09/17	05/09/17
2017-0049	03/29/17	Ben Franklin Plumbing		574 Idyleberry Rd		03/31/17	03/31/17	03/31/17
2017-0050	04/03/17	Gopher-It Trenchless		408 Hickory lane		04/04/17	04/04/17	04/04/17
2017-0051	04/04/17	Advanced Trenchless		590 Heather Way		04/14/17	05/01/17	05/01/17
2017-0052	04/04/17	Gopher-It Trenchless		163 Whittier Ave		04/04/17	04/05/17	04/05/17
2017-0053	04/10/17	Ben Franklin Plumbing		24 Drakes Cove		04/10/17	04/12/17	04/12/17
2017-0054	04/11/17	Gopher-It Trenchless		653 Las Colindas		04/10/17	04/11/17	04/11/17
2017-0055	04/12/17	Pacific Trenchless		1057 Las Gallinas Ave		04/12/17	04/13/17	04/13/17

LGVSD LATERAL PERMIT APPLICATION

2017 LOG

PERMIT #	DATE APPLIED	APPLICANT NAME (i.e. contractor)	Prop. Owner Name	Property Address	Prop. Owner Ph no.	WORK BEGIN	WORK END	Date Inspected
2017-0056	04/24/17	Peter Levi Plumbing		29 Mt. McKinley Rd		04/26/17	04/26/17	04/26/17
2017-0057	04/20/17	Marin Roto-Rooter		995 Del Ganado Rd		04/20/17	04/28/17	04/28/17
2017-0058	05/02/17	Amesos Plumbing		785 Pine Lane		05/03/17	05/11/17	05/11/17
2017-0059	05/02/17	Amesos Plumbing		865 Pine Lane		05/03/17	05/11/17	05/11/17
2017-0060	03/30/17	Amesos Plumbing		768 Penny Royal		04/17/17	05/02/17	05/02/17
2017-0061	03/29/17	Amesos Plumbing		830 Pine Lane		04/17/17	05/03/17	05/03/17
2017-0062	03/30/17	Amesos Plumbing		835 Pine Lane		04/17/17	05/03/17	05/03/17
2017-0063	05/04/17	Sewer Connection		34 Mt. Tallac Ct		05/04/17	05/05/17	05/05/17
2017-0064	05/07/17	PipeSpy Marin		665 Barbary Lane		05/07/17	05/08/17	05/08/17
2017-0064	05/04/17	Thomas R. Jackson		67 Edward Ave		05/11/17	05/22/17	05/22/17
2017-0065	05/03/17	Challenge Rootet		220 El Prado Ave		05/08/17	05/08/17	05/08/17
2017-0066	05/10/17	Peter Levi Plumbing		772 Beechnut Ct		05/10/17	05/12/17	05/12/17
2017-0067	04/18/17	Hardiman Construction		101 Edward Ave		04/18/17	05/12/17	05/12/17
2017-0068	void							
2017-0069	05/11/17	Amesos Plumbing		830 Pine Lane		05/11/17	05/15/17	05/15/17
2017-0070	05/15/17	Gopher-It Trenchless		217 Cobblestone Dr		05/22/17	08/11/17	08/11/17
2017-0071	05/24/17	Ben Franklin Plumbing		128 Blackstone Dr		05/30/17	05/31/17	05/31/17
2017-0072	06/02/17	Challenge Rootet		3 Corrillo Dr		06/07/17	06/07/17	06/07/17
2017-0073	06/05/17	Gopher-It Trenchless		894 Penny Royal Lane		06/12/17	06/22/17	06/22/17
2017-0074	06/14/17	Amesos Plumbing		357 Hibiscus Way		06/19/17	06/23/17	06/23/17
2017-0075	06/15/17	Gopher-It Trenchless		587 Tamarack Dr.		06/22/17	07/03/17	07/03/17
2017-0076	06/30/17	PipeSpy Marin		37 Sandalwood Ct.		07/08/17	07/26/17	07/26/17
2017-0077	06/21/17	McDevitt		291 Smith Ranch Rd.		06/30/17		
2017-0078	06/21/17	Sewer Connection		1264 Idylberry Rd		06/23/17	07/03/17	07/03/17
2017-0079	06/28/17	Lem Salusal		273 Flagstone Terr		06/28/17	06/30/17	06/30/17
2017-0080	06/28/17	Marin H2O		164 N. San Pedro			07/05/17	07/05/17
2017-0081	07/12/17	Marin H2O		164 N. San Pedro		07/12/17	07/13/17	07/13/17
2017-0082								
2017-0083	07/14/17	Gary Wanegar		2813 Heatherstone		07/19/17	07/27/17	07/27/17
2017-0084	07/13/17	Marin Roto-Rooter		248 Waterside Circle		07/17/17	07/21/17	07/21/17
2017-0085	07/21/17	Gopher-It Trenchless		317 El Fasian		08/01/17	08/11/17	08/11/17
2017-0086	07/27/17	Ongaro and Sons		696 Las Colindas			08/09/17	08/09/17
2017-0087	08/03/17	Gopher-It Trenchless		1060 Las Pavodas		08/09/17	08/10/17	08/10/17
2017-0088	08/03/17	Gopher-It Trenchless		354 Hibiscus		08/09/17	08/25/17	08/25/17
2017-0089	08/03/17	Gopher-It Trenchless		780 Las Colindas		08/10/17		
2017-0090	08/04/17	Carlos Medina		223 Mirada Ave		08/08/17	09/11/17	09/11/17
2017-0091	08/07/17	Linscott Engineering		35 Pt. Gallinas Rd.		08/09/17	08/17/17	08/17/17
2017-0092	08/14/17	Sewer Tek		252 Arias St.		08/15/17	08/31/17	08/31/17
2017-0093	08/22/17	Adam Owens		360 Hibiscus Way		08/25/17	08/25/17	08/25/17
2017-0094	08/21/17	Amesos Plumbing		800 Pine Lane		08/23/17	08/28/17	08/28/17
2017-0095	08/21/17	Ghilotti Construction		350 Los Ranchitos		09/05/17		
2017-0096	09/01/17	PJ Plumbing Inc		510 Cedar Hill Dr.		09/05/17	09/07/17	09/07/17
2017-0097	09/01/17	Gopher-It Trenchless		591 Las Colindas		09/01/17	02/22/18	02/22/18
2017-0098	09/01/17	Sewer Connection		118 North San Pedro		09/06/17	09/11/17	09/11/17
2017-0099	09/05/17	Ben Franklin Plumbing		709 Estancia Way			09/11/17	09/11/17
2017-0100	09/15/17	S&H Construction Inc		352 Smith Ranch Rd		09/18/17	09/22/17	09/22/17
2017-0101	09/18/17	Linscott Engineering		301 Smith Ranch Rd		09/18/17		
2017-0102	09/20/17	Juan Chao		361 Del Ganado Rd		09/21/17	09/25/17	09/25/17
2017-0103	09/26/17	Gopher-It Trenchless		327 N. San Pedro		10/02/17	10/17/17	10/17/17
2017-0104	09/27/17	Peter Levi Plumbing		879 Butternut Dr.		09/27/17	10/03/17	10/03/17
2017-0105	10/03/17	Marin H2O		324 Miller Creek Rd		10/10/17	10/18/17	10/18/17
2017-0106	10/17/17	Fletcher Plumbing and Cons		5800 Northgate Dr		10/23/17	10/26/17	10/26/17
2017-0107	10/24/17	Advanced Trenchless		363 Hibiscus Way		10/30/17	10/30/17	10/30/17
2017-0108	10/23/17	PipeSpy Marin		10 Garden Ave		11/07/17	12/20/17	12/20/17
2017-0109	10/27/17	Gopher-It Trenchless		70 Skyview Terrace		11/04/17	12/18/17	12/18/17

LGVSD LATERAL PERMIT APPLICATION

2017 LOG

PERMIT #	DATE APPLIED	APPLICANT NAME (i.e. contractor)	Prop. Owner Name	Property Address	Prop.Owner Ph no.	WORK BEGIN	WORK END	Date Inspected
2017-0110	11/06/17	PipeSpy Marin		782 Appleberry Dr		12/13/17	12/13/17	12/13/17
2017-0111	11/09/17	Amesos Plumbing		29 Washington Ave		11/09/17	11/10/17	11/10/17
2017-0112	11/10/17	Gopher-It Trenchless		457 Nova Albion Way		11/14/17	11/15/17	11/15/17
2017-0113	11/14/17	Roto roter Marin		28 Circle Rd		11/16/17	11/28/17	11/28/17
2017-0114	11/14/17	Marin Roto-Rooter		730 Pine Lane		11/27/17	11/30/17	11/30/17
2017-0115	11/14/17	PipeSpy Marin		780 Las Colindas		11/30/17	01/12/18	01/12/18
2017-0116	11/21/17	Linscott Engineering		720 Monticello			12/19/17	12/19/17
2017-0117	11/29/17	Ben Franklin Plumbing		43 Golden Hinde		11/29/17	11/30/17	11/30/17
2017-0118	11/30/17	Dean Brazil		2140 Danberry Ln		11/30/17	12/04/17	12/04/17
2017-0119	12/04/17	Gopher-It Trenchless		9 Mt. Sustina Ct.		12/04/17	12/06/17	12/06/17
2017-0120	12/04/17	Gopher-It Trenchless		14 Mt. Sustina Ct		12/04/17	12/06/17	12/06/17
2017-0121	12/06/17	Roto Rooter Marin		41 Vallejo Way		12/07/17	12/08/17	12/08/17
2017-0122	12/13/17	Icon Plumbing		409 Nova Albion Way		12/14/17	12/22/17	12/22/17
2017-0123	12/15/17	Ben Franklin Plumbing		630 Las Colindas		12/20/17	12/22/17	12/22/17
2017-0124	12/28/17	Amesos Plumbing		735 Las Colindas		12/28/17	12/29/17	12/29/17
2017-0125	12/29/17	Tom Lynch Construction		874 Butternut Dr.		12/31/17	01/03/18	01/03/18

Plumbers and Sewer Contractors

Your Actions Can Prevent Sanitary Sewer Overflows!

What are Sanitary Sewer Overflows or SSOs?

Sanitary Sewer Overflows or SSOs discharge untreated or partially treated human and industrial waste, debris and disease-causing organisms from the sanitary sewer onto the ground near and into homes and potentially into creeks, rivers, lakes or streams.

SSOs may result in property damage, environmental damage and/or potential liability to you or your company. Allowing sewage to discharge to a gutter, storm drain or waterway may subject you to penalties and/or out-of-pocket costs to reimburse cities or public agencies for clean-up efforts and regulatory penalties.



Important!

If you can't prevent a root ball from entering the sewer main when working in our service area, **please call us** at (415) 472-1734 so we can work with you (free of charge) to remove the root ball from the sewer main to prevent blockages further downstream.



Who Do I Call to Avoid a Sewer Overflow?

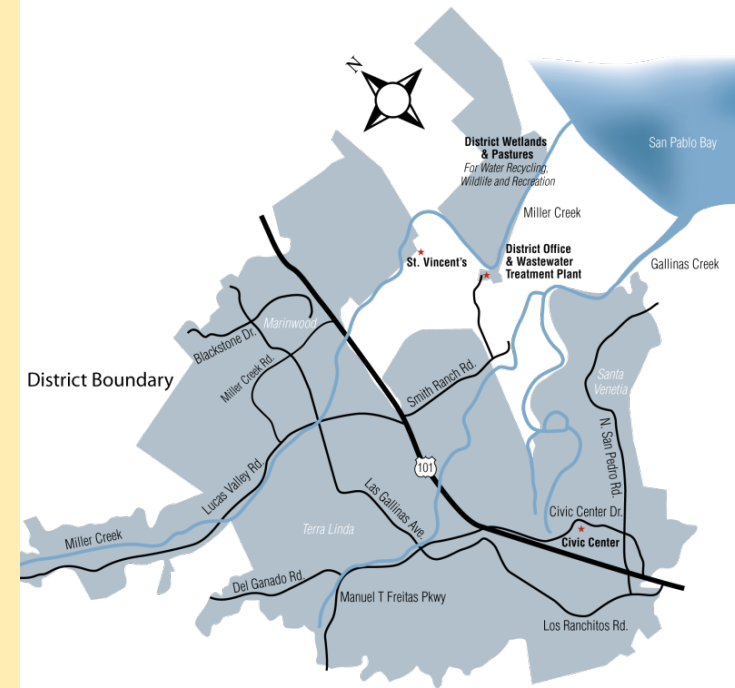
Help us help you...

If you require our free assistance to help clear root balls, grease blockages and other debris from a main sewer line to prevent an SSO or to open a manhole in our service area,

Please Contact us at
(415) 472-1734

Use this number during regular business hours or for emergencies after hours, weekends & holidays.

Visit the District's website at:
www.lgvsd.org



Plumbers and Sewer Contractors

Your Actions Can Prevent Sanitary Sewer Overflows!



BAY AREA POLLUTION PREVENTION



Bay Area Clean Water Agencies
A Joint Powers Public Agency



300 Smith Ranch Road, San Rafael, CA 94903



Las Gallinas Valley Sanitary District was awarded "Small Collection System of the Year" for a three-county region including Marin. Among the key reasons: our overflows were 500 percent below the average, and we have the lowest spill record for Marin County. Your help allows us to maintain this record!

Pollution Prevention Tip for Customers

Do not put fats, oil or grease (FOG) down the drain. Grease can clog pipes and potentially cause an overflow that may release sewage into the environment. Excessive FOG also interferes with the operation of our wastewater treatment facility. Instead, collect fats, oil or grease from your household cooking in a container (which can be sealed) and put it in the trash or large quantities can be disposed of at your the local household hazardous waste facility.

The local facility for Marin County residents (except Novato):

Marin Household Hazardous Waste Facility
565 Jacoby Street, San Rafael
(415) 485-6806

Business Appointments call: (415) 485-5648

Working in the District....

If you are connecting to the District's main line, or performing repair work on a private sewer lateral, you need to have a permit from the District and an inspection completed before you backfill.

Please call:

(415) 472-1734

(24 hour notice required for inspections)

or visit the District's website:

www.lgvsd.org

300 Smith Ranch Road, San Rafael, CA 94903

How can you prevent SSOs? *Avoid associated penalties and fines*

When clearing plugged sewer laterals:

- ☑ Remove root balls, grease blockages and any other debris; don't push debris from the lateral to the sewer main.
- ☑ If you can't prevent a root ball from entering the sewer main when working in our service area, **please call us at (415) 472-1734** so we can work with you (free of charge) to remove the root ball from the sewer main to prevent blockages further downstream.
- ☑ Use plenty of water to flush lines.
- ☑ Don't open manholes. Hazardous sewer gases from manholes are odorless, undetectable and can be deadly. Call us to open manholes for you and please note that discharge into a publicly-owned manhole requires a permit. Contact our Collection System at **(415) 472-1734** for an application.

When constructing sewer laterals:

- ☑ Check your work area. Gravel, backfill material and test plugs can become lodged in the sewer line and cause blockages. Make sure no debris is left in the sewer line before you backfill.
- ☑ Avoid offset joints – offset joints make sewer lines vulnerable to root intrusion & grease accumulation, cause debris hang-ups and make lines harder to clean. Properly bed your joints and don't hammer tap.
- ☑ Installation of a safety relief valve is mandatory.
- ☑ In the Las Gallinas service area, visit our website at www.lgvsd.org or contact us for the appropriate construction specs and no-cost permit at **(415) 472-1734**.
- ☑ An inspection by the District is required before you backfill. Please allow 24-hour notice for scheduling.



Action Required for SEWER OVERFLOW / SPILLS

In the event that a plumber is called to **respond to a sewage spill** that is connected to the Las Gallinas Valley Sanitary District collection line, it is a requirement that key information be submitted to the District as soon as possible. **The State of California requires the District to report the spill within 2 hours.**

Please phone the District at 415-472-1734. Thank you.